

Recombinant Human SMPD1 Protein (Gly319-Gly579), N-His tagged

Cat. No. SMPD1-6318H Lot. No. (See product label)

SPECIFICATION

Product Overview	Recombinant human SMPD1 (Gly319-Gly579) fused with the N-His tag was expressed in E. coli.
Species	Human
Source	E.coli
ProteinLength	Gly319-Gly579
Form	Lyophilized powder/frozen liquid
Molecular Mass	32.33 kDa
Purity	> 90 % as determined by SDS-PAGE
Notes	For research use only.
Storage	Use a manual defrost freezer and avoid repeated freeze thaw cycles. Store at 2 to 8 centigrade for one week. Store at -20 to -80 centigrade for twelve months from the date of receipt.
Storage Buffer	0.01M PBS, pH 7.4, 0.02 % NLS
Reconstitution	Reconstitute in sterile water for a stock solution.

 Tel: 1-631-559-9269 1-516-512-3133

 Email: info@creative-biomart.com  Fax: 1-631-938-8127

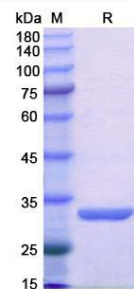
 45-1 Ramsey Road, Shirley, NY 11967, USA

Shipping

They are shipped out with dry ice/blue ice unless customers require otherwise.

GENE INFORMATION

Gene Name	SMPD1 sphingomyelin phosphodiesterase 1, acid lysosomal [Homo sapiens (human)]
Official Symbol	SMPD1
Synonyms	SMPD1; sphingomyelin phosphodiesterase 1, acid lysosomal; sphingomyelin phosphodiesterase; acid sphingomyelinase; ASM; NPD; ASMASE;
Gene ID	6609
mRNA Refseq	NM_000543
Protein Refseq	NP_000534
MIM	607608
UniProt ID	P17405

SDS-PAGE


 Tel: 1-631-559-9269 1-516-512-3133

 Email: info@creative-biomart.com  Fax: 1-631-938-8127

 45-1 Ramsey Road, Shirley, NY 11967, USA