

Active Recombinant Human SMPD1 protein, His-tagged

Cat. No. SMPD1-655H Lot. No. (See product label)

SPECIFICATION

Product Overview	Active Recombinant Human SMPD1 protein(NP_000534.3) (Gly 85-Cys 631) was expressed in Insect Cells, fused with a polyhistidine tag at the N-terminus.
Species	Human
Source	Insect Cells
ProteinLength	85-631 aa
Form	Lyophilized from sterile 50mM Tris, 100mM NaCl, pH 8.0, 10% glycerol.
Bio-activity	Measured by its ability to cleave 2-N-Hexadecanoylamino-4-nitrophenylphosphorylcholine (HNPPC). The specific activity is 77 pmol/min/μg.
Molecular Mass	The secreted recombinant human SMPD1 consists of 563 amino acids and predicts a molecular mass of 65 kDa as estimated by SDS-PAGE under reducing conditions.
Endotoxin	< 1.0 EU per μg of the protein as determined by the LAL method.
Purity	> 91 % as determined by SDS-PAGE
Storage	Store it under sterile conditions at -20°C to -80°C upon receiving. Recommend to aliquot the protein into smaller quantities for optimal storage. Avoid repeated freeze-thaw cycles.

 Tel: 1-631-559-9269 1-516-512-3133

 Email: info@creative-biomart.com  Fax: 1-631-938-8127

 45-1 Ramsey Road, Shirley, NY 11967, USA

Reconstitution	It is recommended that sterile water be added to the vial to prepare a stock solution of 0.2 ug/ul. Centrifuge the vial at 4°C before opening to recover the entire contents.
protein Refseq-Weblink	http://www.ncbi.nlm.nih.gov/protein/NP_000534.3
Unit ID	P17405
Unit ID-Weblink	https://www.uniprot.org/uniprotkb/P17405

GENE INFORMATION

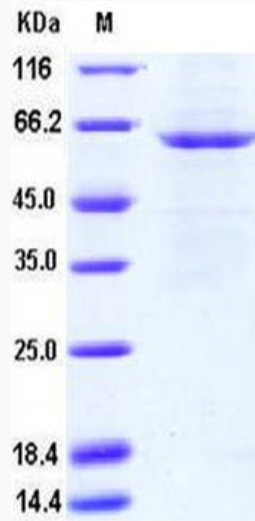
Gene Name	SMPD1 sphingomyelin phosphodiesterase 1, acid lysosomal [Homo sapiens]
Official Symbol	SMPD1
Synonyms	SMPD1; sphingomyelin phosphodiesterase 1, acid lysosomal; sphingomyelin phosphodiesterase; acid sphingomyelinase; ASM; NPD; ASMASE;
Gene ID	6609
mRNA Refseq	NM_000543
protein Refseq	NP_000534
MIM	607608

 Tel: 1-631-559-9269 1-516-512-3133

 Email: info@creative-biomart.com  Fax: 1-631-938-8127

 45-1 Ramsey Road, Shirley, NY 11967, USA

SDS-PAGE



 Tel: 1-631-559-9269 1-516-512-3133

 Email: info@creative-biomart.com  Fax: 1-631-938-8127

 45-1 Ramsey Road, Shirley, NY 11967, USA