

## Active Recombinant Human SMPD1 protein, His-tagged

Cat. No. SMPD1-656H Lot. No. (See product label)

### SPECIFICATION

<b>Product Overview</b>	Active Recombinant Human SMPD1 protein(NP_000534.3) (Met 1-Cys 631) was expressed in Insect Cells, fused with a polyhistidine tag at the C-terminus.
<b>Species</b>	Human
<b>Source</b>	Insect Cells
<b>ProteinLength</b>	1-631 aa
<b>Form</b>	Lyophilized from sterile 50mM Tris, 100mM NaCl, pH 8.0, 0.1% OGP, 10% glycerol.
<b>Bio-activity</b>	Measured by its ability to cleave. 2-N-Hexadecanoylamino-4-nitrophenylphosphorylcholine (HNPPC). The specific activity is >1,000 pmol/min/μg.
<b>Molecular Mass</b>	The secreted recombinant human SMPD1 consists of 518 amino acids and predicts a molecular mass of 65 kDa as estimated by SDS-PAGE under reducing conditions.
<b>Endotoxin</b>	< 1.0 EU per μg of the protein as determined by the LAL method.
<b>Purity</b>	> 94 % as determined by SDS-PAGE
<b>Storage</b>	Store it under sterile conditions at -20°C to -80°C upon receiving. Recommend to aliquot the protein into smaller quantities for optimal storage. Avoid repeated freeze-thaw cycles.

 Tel: 1-631-559-9269 1-516-512-3133

 Email: [info@creative-biomart.com](mailto:info@creative-biomart.com)  Fax: 1-631-938-8127

 45-1 Ramsey Road, Shirley, NY 11967, USA

<b>Reconstitution</b>	It is recommended that sterile water be added to the vial to prepare a stock solution of 0.2 ug/ul. Centrifuge the vial at 4°C before opening to recover the entire contents.
<b>protein Refseq-Weblink</b>	<a href="http://www.ncbi.nlm.nih.gov/protein/NP_000534.3">http://www.ncbi.nlm.nih.gov/protein/NP_000534.3</a>
<b>Unit ID</b>	P17405
<b>Unit ID-Weblink</b>	<a href="https://www.uniprot.org/uniprotkb/P17405">https://www.uniprot.org/uniprotkb/P17405</a>

## GENE INFORMATION

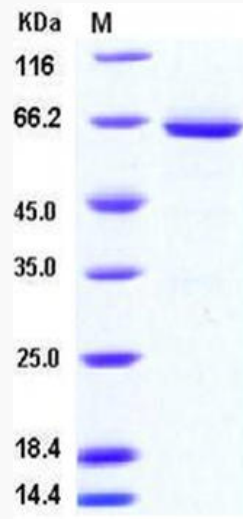
<b>Gene Name</b>	<a href="#">SMPD1 sphingomyelin phosphodiesterase 1, acid lysosomal [ Homo sapiens ]</a>
<b>Official Symbol</b>	<a href="#">SMPD1</a>
<b>Synonyms</b>	SMPD1; sphingomyelin phosphodiesterase 1, acid lysosomal; sphingomyelin phosphodiesterase; acid sphingomyelinase; ASM; NPD; ASMASE;
<b>Gene ID</b>	<a href="#">6609</a>
<b>mRNA Refseq</b>	<a href="#">NM_000543</a>
<b>protein Refseq</b>	NP_000534
<b>MIM</b>	<a href="#">607608</a>

 Tel: 1-631-559-9269 1-516-512-3133

 Email: [info@creative-biomart.com](mailto:info@creative-biomart.com)  Fax: 1-631-938-8127

 45-1 Ramsey Road, Shirley, NY 11967, USA

SDS-PAGE



 Tel: 1-631-559-9269 1-516-512-3133

 Email: [info@creative-biomart.com](mailto:info@creative-biomart.com)  Fax: 1-631-938-8127

 45-1 Ramsey Road, Shirley, NY 11967, USA