

# Recombinant Full Length Human SMPD1 Protein, C-Flag-tagged

**Cat. No.** SMPD1-732HFL    **Lot. No.** (See product label)

## SPECIFICATION

<b>Product Overview</b>	Recombinant Full Length Human SMPD1 Protein, fused to Flag-tag at C-terminus, was expressed in Mammalian cells.
<b>Species</b>	Human
<b>Source</b>	Mammalian Cells
<b>ProteinLength</b>	1-631 aa
<b>Description</b>	The protein encoded by this gene is a lysosomal acid sphingomyelinase that converts sphingomyelin to ceramide. The encoded protein also has phospholipase C activity. Defects in this gene are a cause of Niemann-Pick disease type A (NPA) and Niemann-Pick disease type B (NPB). Multiple transcript variants encoding different isoforms have been identified.
<b>Form</b>	25 mM Tris HCl, pH 7.3, 100 mM glycine, 10% glycerol.
<b>Molecular Mass</b>	65 kDa
<b>AA Sequence</b>	MPRYGASLRQSCPRSGREQGQDGTAGAPGLLWMGLVLALALALALALALS DSRVL WAPAEAHPLSPQGHP ARLHRIVPRLRDVFGWGNLTC PICKGLFTAINLGLKKEPNV ARVGSVAIKLCNLLKIAPPAVCQSIVHLF EDDMVEVWRRSVLSPSEACGLLLGSTCG HWDIFSSWNISLPTVPKPPKPPSPAPGAPVSRILFLTDLH WDHDYLEGTDPDCA DPLCCRRGSGLPASRPGAGYWGEYSKCDLPLRTLESLLSGLGPAGPFDMVYWTG

 Tel: 1-631-559-9269    1-516-512-3133

 Email: [info@creative-biomart.com](mailto:info@creative-biomart.com)     Fax: 1-631-938-8127

 45-1 Ramsey Road, Shirley, NY 11967, USA



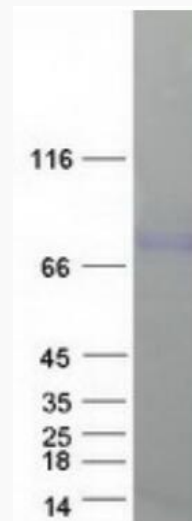
D IPAHDVWHQTRQDQLRALTTVTALVRKFLGPVPVYPVAVGNHESTPVNSFPPPFIE  
 GNHSSRWLYEAMAKA WEPWLP AEALRTL RIGGFYALSPYPGLRLISLNMNFCSREN  
 FWLLINSTDPAGQLQWL VGELQAAEDRGD KVHIIGHIPPGHCLKSWSWNYRIVAR  
 YENTLAAQFFGHTHVDEFEV FYDEETLSRPLAVAF LAPSATTY IGLNPGYRVYQIDG  
 NYSGSSHVLDHETYILNLTQANIPGAIPHWQLLYRARETYGLPNTLPTAWHNLVY R  
 MRGDMQLFQTFWFLYHKGHPPEPCGTPCRLATLCAQLSARADSPALCRHLMPDG  
 SLPEAQLSWPRPLF  
 CTRTRPLEQKLISEEDLAANDILDYKDDDDKV

<b>Purity</b>	> 80% as determined by SDS-PAGE and Coomassie blue staining.
<b>Stability</b>	Stable for 12 months from the date of receipt of the product under proper storage and handling conditions. Avoid repeated freeze-thaw cycles.
<b>Storage</b>	Store at -80 centigrade.
<b>Concentration</b>	>50 ug/mL as determined by microplate BCA method.
<b>Preparation</b>	Recombinant protein was captured through anti-DDK affinity column followed by conventional chromatography steps.
<b>Protein Families</b>	Druggable Genome, Transmembrane
<b>Protein Pathways</b>	Lysosome, Metabolic pathways, Sphingolipid metabolism
<b>Full Length</b>	Full L.

## GENE INFORMATION

<b>Gene Name</b>	SMPD1 sphingomyelin phosphodiesterase 1 [ Homo sapiens (human) ]
------------------	--

<b>Official Symbol</b>	SMPD1
<b>Synonyms</b>	ASM; NPD; ASMASE
<b>Gene ID</b>	6609
<b>mRNA Refseq</b>	NM_000543.5
<b>Protein Refseq</b>	NP_000534.3
<b>MIM</b>	607608
<b>UniProt ID</b>	P17405



Coomassie blue staining of purified SMPD1 protein.

 Tel: 1-631-559-9269 1-516-512-3133

 Email: [info@creative-biomart.com](mailto:info@creative-biomart.com)  Fax: 1-631-938-8127

 45-1 Ramsey Road, Shirley, NY 11967, USA