

Recombinant Human SMPD1 protein, His-tagged

Cat. No. SMPD1-7353H Lot. No. (See product label)

SPECIFICATION

Product Overview	Recombinant Human SMPD1 protein(P17405)(47-631aa), fused with C-terminal His tag, was expressed in HEK293.
Species	Human
Source	HEK293
ProteinLength	47-631aa
Tag	C-His
Form	If the delivery form is liquid, the default storage buffer is Tris/PBS-based buffer, 5%-50% glycerol. If the delivery form is lyophilized powder, the buffer before lyophilization is Tris/PBS-based buffer, 6% Trehalose, pH 8.0.
Molecular Mass	66.6 kDa
Purity	Greater than 90% as determined by SDS-PAGE. Greater than 90% as determined by SEC-HPLC.
Storage	Store at -20°C/-80°C upon receipt, aliquoting is necessary for mutiple use. Avoid repeated freeze-thaw cycles.
Reconstitution	We recommend that this vial be briefly centrifuged prior to opening to bring the contents to the bottom. Please reconstitute protein in deionized sterile water to a

 Tel: 1-631-559-9269 1-516-512-3133

 Email: info@creative-biomart.com  Fax: 1-631-938-8127

 45-1 Ramsey Road, Shirley, NY 11967, USA

concentration of 0.1-1.0 mg/mL. We recommend to add 5-50% of glycerol (final concentration) and aliquot for long-term storage at -20°C/-80°C.

AA Sequence


LALSDSRVLWAPAEAHPLSPQGHPARLHRIVPRLRDVFGWGNLTCPICKGLFTAINL
 GLKKEPNVARVGSVAIKLCNLLKIAPPAVCQSIVHLFEDDMVEVWRRSVLSPSEACG
 LLLGSTCGHWDIFSSWNISLPTVPKPPPSPAPGAPVSRILFLTDLHWDHDDYLE
 GTDPDCADPLCCRRGSLPPASRPGAGYWGEYSKCDLPLRTLESLLSGLGPAGPF
 DMVYWTGDIPAHDVWHQTRQDQLRALTTVTALVRKFLGPVPVYPAVGNHSTPVN
 SFPPPFIEGNHSSRWLYEAMAKAWEPWLP AEALRTL RIGGFYALSPYPGLRLISLNM
 NFCSRENFWLLINSTDPAGQLQWLVGELQAAEDRGDKVHIIGHIPPGHCLKSWSWN
 YYRIVARYENTLAAQFFGHVDFEFVYDEETLSRPLAVAFLAPSATTYIGLNPGYR
 VYQIDGNYSGSSHVLDHETYILNLTQANIPGAIPHWQLLYRARETYGLPNTLPTAW
 HNLVYRMRGDMQLFQTFWFLYHKGHPSEPCGTPCRLATLCAQLSARADSPALCR
 HLMPDGSLEPAQSLWPRPLFC

GENE INFORMATION

Gene Name	SMPD1 sphingomyelin phosphodiesterase 1, acid lysosomal [Homo sapiens]
Official Symbol	SMPD1
Synonyms	SMPD1; sphingomyelin phosphodiesterase 1, acid lysosomal; sphingomyelin phosphodiesterase; acid sphingomyelinase; ASM; NPD; ASMASE;
Gene ID	6609
mRNA Refseq	NM_000543
Protein Refseq	NP_000534
MIM	607608

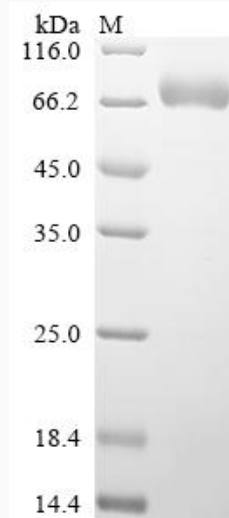
 Tel: 1-631-559-9269 1-516-512-3133

 Email: info@creative-biomart.com  Fax: 1-631-938-8127

 45-1 Ramsey Road, Shirley, NY 11967, USA

UniProt ID P17405

SDS-PAGE



 Tel: 1-631-559-9269 1-516-512-3133

 Email: info@creative-biomart.com  Fax: 1-631-938-8127

 45-1 Ramsey Road, Shirley, NY 11967, USA