

Recombinant Human SMPD2 Full Length Transmembrane protein, His-tagged

Cat. No. SMPD2-1038H Lot. No. (See product label)

SPECIFICATION

Product Overview	Recombinant Human SMPD2 protein(O60906)(1-423aa), fused with N-terminal His tag, was expressed in in vitro E. coli expression system.
Species	Human
Source	E.coli
ProteinLength	1-423aa
Form	<p>If the delivery form is liquid, the default storage buffer is Tris/PBS-based buffer, 5%-50% glycerol.</p> <p>If the delivery form is lyophilized powder, the buffer before lyophilization is Tris/PBS-based buffer, 6% Trehalose, pH 8.0.</p>
Molecular Mass	49.1 kDa
AA Sequence	<p>MKPNFSLRLRIFNLNCWGIPYLSKHRADRMRRRLGDFLNQESFDLALLEEVWSEQDF QYLRQKLSPTYPAAHFRSGIIGSGLCVFSKHPIQELTQHIIYTLNGYPYMIHHGDWFS GKAVGLLVHLHLSGMVLNAYVTHLHAEYNRQKDIYLAHRVAQAWELAQFIHHTSKKAD VVLLCGDLNMHPEDLGCCLLKEWTGLHDAYLETRDFKGSSEEGNTMVPKNCYVSSQQ ELKPFPPGVRIDYVLYKAVSGFYISCKSFETTTGFDPHRGTPLSDHEALMATLFVRHS PPQQNPSSTHGAERSPLMCVLKEAWTELGLGMAQARWWATFASYVIGLGLLLLLAL LCVLAAGGGAGEAAILLWTPSVGLVLWAGAFYLFHVQEVNGLYRAQAELQHVLGRA REAQDLGPEPQPALLLGQQEGDRTKEQ</p>

 Tel: 1-631-559-9269 1-516-512-3133

 Email: info@creative-biomart.com  Fax: 1-631-938-8127

 45-1 Ramsey Road, Shirley, NY 11967, USA

Purity	Greater than 90% as determined by SDS-PAGE.
Storage	Store at -20°C/-80°C upon receipt, aliquoting is necessary for mutiple use. Avoid repeated freeze-thaw cycles.
Reconstitution	Please reconstitute protein in deionized sterile water to a concentration of 0.1-1.0 mg/mL. We recommend to add 5-50% of glycerol (final concentration) and aliquot for long-term storage at -20°C/-80°C.

GENE INFORMATION

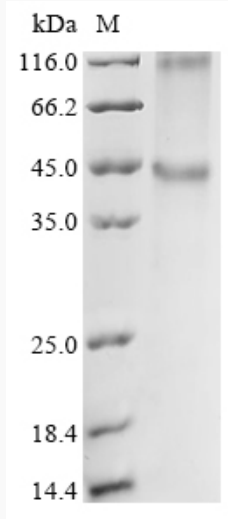
Gene Name	SMPD2 sphingomyelin phosphodiesterase 2, neutral membrane (neutral sphingomyelinase) [Homo sapiens]
Official Symbol	SMPD2
Synonyms	SMPD2; sphingomyelin phosphodiesterase 2, neutral membrane (neutral sphingomyelinase); sphingomyelin phosphodiesterase 2; ISC1; nSMase; N-SMase; lyso-PAF-PLC; neutral sphingomyelinase; lyso-platelet-activating factor-phospholipase C; NSMASE; NSMASE1;
Gene ID	6610
mRNA Refseq	NM_003080
Protein Refseq	NP_003071
MIM	603498
UniProt ID	O60906

 Tel: 1-631-559-9269 1-516-512-3133

 Email: info@creative-biomart.com  Fax: 1-631-938-8127

 45-1 Ramsey Road, Shirley, NY 11967, USA

SDS-PAGE



 Tel: 1-631-559-9269 1-516-512-3133

 Email: info@creative-biomart.com  Fax: 1-631-938-8127

 45-1 Ramsey Road, Shirley, NY 11967, USA