

Recombinant Human SMPD2 Protein (Met1-Arg236), N-His tagged

Cat. No. SMPD2-6319H Lot. No. (See product label)

SPECIFICATION

Product Overview	Recombinant human SMPD2 (Met1-Arg236) fused with the N-His tag was expressed in E. coli.
Species	Human
Source	E.coli
ProteinLength	Met1-Arg236
Form	Lyophilized powder/frozen liquid
Molecular Mass	29.66 kDa
Purity	> 90 % as determined by SDS-PAGE
Notes	For research use only.
Storage	Use a manual defrost freezer and avoid repeated freeze thaw cycles. Store at 2 to 8 centigrade for one week. Store at -20 to -80 centigrade for twelve months from the date of receipt.
Storage Buffer	0.01M PBS, pH 7.4, 0.02 % NLS
Reconstitution	Reconstitute in sterile water for a stock solution.

 Tel: 1-631-559-9269 1-516-512-3133

 Email: info@creative-biomart.com  Fax: 1-631-938-8127

 45-1 Ramsey Road, Shirley, NY 11967, USA

Shipping They are shipped out with dry ice/blue ice unless customers require otherwise.

GENE INFORMATION

Gene Name SMPD2 sphingomyelin phosphodiesterase 2 [Homo sapiens (human)]

Official Symbol SMPD2

Synonyms SMPD2; sphingomyelin phosphodiesterase 2, neutral membrane (neutral sphingomyelinase); sphingomyelin phosphodiesterase 2; ISC1; nSMase; N-SMase; lyso-PAF-PLC; neutral sphingomyelinase; lyso-platelet-activating factor-phospholipase C; NSMASE; NSMASE1;

Gene ID 6610

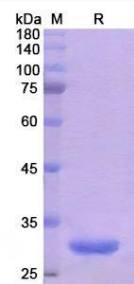
mRNA Refseq NM_003080

Protein Refseq NP_003071

MIM 603498

UniProt ID O60906

SDS-PAGE



 Tel: 1-631-559-9269 1-516-512-3133

 Email: info@creative-biomart.com  Fax: 1-631-938-8127

 45-1 Ramsey Road, Shirley, NY 11967, USA