

Recombinant Human SMPD2 protein, His & GST-tagged

Cat. No. SMPD2-8253H Lot. No. (See product label)

SPECIFICATION

Product Overview	Recombinant Human SMPD2 aa. (Lys2~Arg236 (Accession # O60906)) fused with N-terminal His & GST tag was produced in E. coli cells.
Species	Human
Source	E.coli
ProteinLength	Lys2~Arg236
Description	This gene encodes a protein which was initially identified as a sphingomyelinase based on sequence similarity between bacterial sphingomyelinases and a yeast protein. Subsequent studies showed that its biological function is less likely to be as a sphingomyelinase and instead as a lysophospholipase.
Form	Freeze-dried powder
Molecular Mass	Predicted Molecular Mass: 59.2kDa.
Endotoxin	<1.0EU per 1ug (determined by the LAL method)
Purity	>95%
Characteristic	The isoelectric point is 6.6.
Applications	SDS-PAGE; WB; ELISA; IP.

 Tel: 1-631-559-9269 1-516-512-3133

 Email: info@creative-biomart.com  Fax: 1-631-938-8127

 45-1 Ramsey Road, Shirley, NY 11967, USA

Stability	The thermal stability is described by the loss rate of the target protein. The loss rate was determined by accelerated thermal degradation test, that is, incubate the protein at 37°C for 48h, and no obvious degradation and precipitation were observed. (Referring from China Biological Products Standard, which was calculated by the Arrhenius equation.) The loss of this protein is less than 5% within the expiration date under appropriate storage condition.
Storage	Avoid repeated freeze/thaw cycles. Store at 2-8°C for one month. Aliquot and store at -80°C for 12 months.
Storage Buffer	Supplied as lyophilized form in 20mM Tris, 150mM NaCl, pH8.0, containing 1mM EDTA, 1mM DTT, 0.01% sarcosyl, 5% trehalose, and preservative.
Reconstitution	Reconstitute in ddH ₂ O.

GENE INFORMATION

Gene Name	SMPD2 sphingomyelin phosphodiesterase 2 [Homo sapiens (human)]
Official Symbol	SMPD2
Synonyms	SMPD2; sphingomyelin phosphodiesterase 2; ISC1; NSMASE; NSMASE1; N-SMase; lyso-PAF-PLC; lyso-platelet-activating factor-phospholipase C; neutral sphingomyelinase
Gene ID	6610
mRNA Refseq	NM_003080.2
Protein Refseq	NP_003071.2

 Tel: 1-631-559-9269 1-516-512-3133

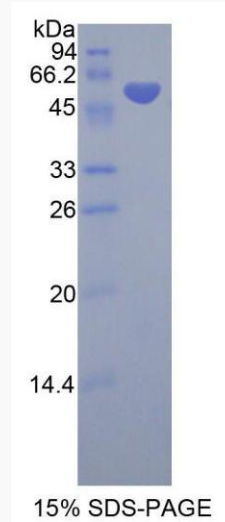
 Email: info@creative-biomart.com  Fax: 1-631-938-8127

 45-1 Ramsey Road, Shirley, NY 11967, USA

UniProt ID

O60906

SDS-PAGE



 Tel: 1-631-559-9269 1-516-512-3133

 Email: info@creative-biomart.com  Fax: 1-631-938-8127

 45-1 Ramsey Road, Shirley, NY 11967, USA