

Recombinant Human SMPD3 Protein, Myc/DDK-tagged, C13 and N15-labeled

Cat. No. SMPD3-6464H Lot. No. (See product label)

SPECIFICATION

Product Overview	SMPD3 MS Standard C13 and N15-labeled recombinant protein (NP_061137) with a C-terminal MYC/DDK tag, was expressed in HEK293 cells.
Species	Human
Source	HEK293
Description	SMPD3 (Sphingomyelin Phosphodiesterase 3) is a Protein Coding gene. Diseases associated with SMPD3 include Pituitary Hormone Deficiency, Combined, 2 and Coffin-Siris Syndrome 1. Among its related pathways are Signaling by GPCR and NGF Pathway. Gene Ontology (GO) annotations related to this gene include sphingomyelin phosphodiesterase activity.
Molecular Mass	70.9 kDa
AA Sequence	MVLYTTPFPNSCLSALHCVSWALIFPCYWLVDRLAASFIPTTYEKQRADDPCCLQL LCTALFTPIYLALLVASLPFAFLGFLFWSPLQSARRPYIYSRLEDKGLAGGAALLSEW KGTGPGKSFATANVCLLPDSLARVNNLFNTQARAKEIGQRIRNGAARPQIKIYIDS PTNTSISAASFSSLVSPQGGDGVARAVPGSIKRTASVEYKGDGGRHPGDEAANGPA SGDPVDSSSPEDACIVRIGGEEGGRPPEADDPVPGGQARNGAGGGPRGQTPNHN QQDGDSGSLGSPSASRESLVKGRAGPDTSASGEPGANSKLLYKASVVKAAARRR RHPDEAFDHEVSAFFPANLDFLCLQEVEFDKRAATKLKEQLHGYFEYILYDVG VYGCQ GCCSFKCLNSGLLFASRYPIMDVAYHCYPNKCND DALASKGALFLKVQVGSTPQDQ

Tel: 1-631-559-9269 1-516-512-3133

Email: info@creative-biomart.com Fax: 1-631-938-8127

45-1 Ramsey Road, Shirley, NY 11967, USA

RIVGYIACHTLHAPQEDSAIRCGQLDLLQDWLADFRKSTSSSSAANPEELVAFDVVC
 GDFNFDNCSSDDKLEQQHSLFTHYRDPCLGPGEEKPWAIGTLLDTNGLYDEDVCT
 PDNLQKVLESEEGRREYLAFPTSKSSGQKGRKELLKGNRRIDYMLHAEGLCPD
 WKAEVEEFSFITQLSGLTDHLPVAMRLMVSSGEEEEATRTRPLEQKLISEEDLAANDIL
 DYKDDDDKV

Purity > 80% as determined by SDS-PAGE and Coomassie blue staining

Stability Stable for 3 months from receipt of products under proper storage and handling conditions.

Storage Store at -80 centigrade. Avoid repeated freeze-thaw cycles.

Concentration 50 µg/mL as determined by BCA

Storage Buffer 100 mM glycine, 25 mM Tris-HCl, pH 7.3.

GENE INFORMATION

Gene Name [SMPD3 sphingomyelin phosphodiesterase 3 \[Homo sapiens \(human\) \]](#)

Official Symbol [SMPD3](#)

Synonyms SMPD3; sphingomyelin phosphodiesterase 3, neutral membrane (neutral sphingomyelinase II); sphingomyelin phosphodiesterase 3; NSMASE2; nSMase-2; neutral sphingomyelinase 2; neutral sphingomyelinase II; FLJ22593; MGC138443;

Gene ID [55512](#)

mRNA Refseq [NM_018667](#)

 Tel: 1-631-559-9269 1-516-512-3133

 Email: info@creative-biomart.com  Fax: 1-631-938-8127

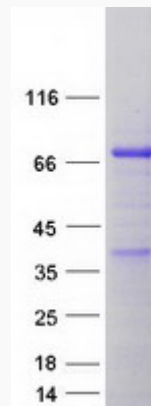
 45-1 Ramsey Road, Shirley, NY 11967, USA

Protein Refseq NP_061137

MIM 605777

UniProt ID Q9NY59

SDS-PAGE



 Tel: 1-631-559-9269 1-516-512-3133

 Email: info@creative-biomart.com  Fax: 1-631-938-8127

 45-1 Ramsey Road, Shirley, NY 11967, USA