

Recombinant Human SMPD3 protein, His&Myc-tagged

Cat. No. SMPD3-8643H Lot. No. (See product label)

SPECIFICATION

Product Overview	Recombinant Human SMPD3 protein(Q9NY59)(86-655aa), fused with N-terminal His tag and C-terminal Myc tag, was expressed in E.coli.
Species	Human
Source	E.coli
ProteinLength	86-655aa
Form	If the delivery form is liquid, the default storage buffer is Tris/PBS-based buffer, 5%-50% glycerol. If the delivery form is lyophilized powder, the buffer before lyophilization is Tris/PBS-based buffer, 6% Trehalose, pH 8.0.
Molecular Mass	68.8 kDa
Purity	Greater than 90% as determined by SDS-PAGE.
Storage	Store at -20°C/-80°C upon receipt, aliquoting is necessary for mutiple use. Avoid repeated freeze-thaw cycles.
Reconstitution	We recommend that this vial be briefly centrifuged prior to opening to bring the contents to the bottom. Please reconstitute protein in deionized sterile water to a concentration of 0.1-1.0 mg/mL. We recommend to add 5-50% of glycerol (final concentration) and aliquot for long-term storage at -20°C/-80°C.

 Tel: 1-631-559-9269 1-516-512-3133

 Email: info@creative-biomart.com  Fax: 1-631-938-8127

 45-1 Ramsey Road, Shirley, NY 11967, USA



AA Sequence

SPLQSARRPYIYSRLEDKGLAGGAALLSEWKGTGPGKSFCFATANVCLLPDSLARV
 >NNLFNTQARAKEIGQRIRNGAARPQIKIYIDSPTNTSISAASFSSLVSPQGGDGVARA
 >VPGSIKRTASVEYKGDGGRHPGDEAANGPASGDPVDSSSPEDACIVRIGGEEGGRP
 >PEADDPVPGGQARNGAGGGPRGQTPNHNQQDGDGSLGSPSASRESLVKGRAG
 >PDTSASGEPGANSKLLYKASVVKAAARRRRHPDEAFDHEVSAFFPANLDFLCLQE
 >VFDKRAATKLKEQLHGYFEYILYDVG VYGCQGCCSFKCLNSGLLFASRYPIIMDVAYH
 >CYPNKCND DALASKGALFLKVQVGSTPQDQRIVGYIACHTLHAPQEDSAIRCGQLDL
 >LQDWLADFRKSTSSSSAANPEELVAFDVVCGDFNFDNCSSDDKLEQQHSLFTHYR
 >DPCRLGPGEEKPWAIGTLLDTNGLYDEDVCTPDNLQKVLSEEGRREYLAFPTSKS
 >SGQKGRKELLKGNRRIDYMLHAEGLCPDWKAEVEEFSFITQLSGLTDHLPVAMR
 >LMVSSGEEEE

GENE INFORMATION

Gene Name

SMPD3 sphingomyelin phosphodiesterase 3, neutral membrane (neutral sphingomyelinase II) [Homo sapiens]

Official Symbol

SMPD3

Synonyms

SMPD3; sphingomyelin phosphodiesterase 3, neutral membrane (neutral sphingomyelinase II); sphingomyelin phosphodiesterase 3; NSMASE2; nSMase-2; neutral sphingomyelinase 2; neutral sphingomyelinase II; FLJ22593; MGC138443;

Gene ID

55512

mRNA Refseq

NM_018667

Protein Refseq

NP_061137

MIM

605777

Tel: 1-631-559-9269 1-516-512-3133

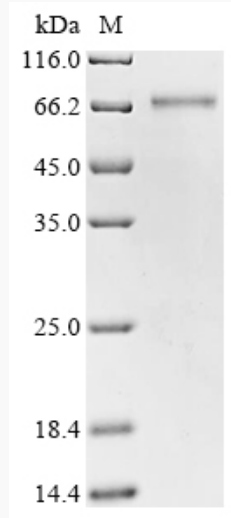
Email: info@creative-biomart.com Fax: 1-631-938-8127

45-1 Ramsey Road, Shirley, NY 11967, USA

UniProt ID

Q9NY59

SDS-PAGE



 Tel: 1-631-559-9269 1-516-512-3133

 Email: info@creative-biomart.com  Fax: 1-631-938-8127

 45-1 Ramsey Road, Shirley, NY 11967, USA