

## Recombinant Human SMPD4 Protein, His-tagged

Cat. No. SMPD4-2709H Lot. No. (See product label)

### SPECIFICATION

<b>Product Overview</b>	Recombinant Human SMPD4 Protein (Ala10-His148) with a N-His tag was expressed in E. coli.
<b>Species</b>	Human
<b>Source</b>	E.coli
<b>ProteinLength</b>	Ala10-His148
<b>Description</b>	The protein encoded by this gene is a sphingomyelinase that catalyzes the hydrolysis of membrane sphingomyelin to form phosphorylcholine and ceramide. This gene is activated by DNA damage, cellular stress, and tumor necrosis factor, but it is downregulated by wild-type p53. The encoded protein localizes to the endoplasmic reticulum and Golgi network.
<b>Form</b>	Freeze-dried powder
<b>Molecular Mass</b>	Predicted Molecular Mass: 19.1 kDa Accurate Molecular Mass: 19 kDa
<b>Endotoxin</b>	<1.0 EU per 1g (determined by the LAL method).
<b>Purity</b>	> 97%
<b>Applications</b>	Positive Control; Immunogen; SDS-PAGE; WB.

 Tel: 1-631-559-9269 1-516-512-3133

 Email: [info@creative-biomart.com](mailto:info@creative-biomart.com)  Fax: 1-631-938-8127

 45-1 Ramsey Road, Shirley, NY 11967, USA

<b>Stability</b>	The thermal stability is described by the loss rate. The loss rate was determined by accelerated thermal degradation test, that is, incubate the protein at 37 centigrade for 48h, and no obvious degradation and precipitation were observed. The loss rate is less than 5% within the expiration date under appropriate storage condition.
<b>Storage</b>	Avoid repeated freeze/thaw cycles. Store at 2-8 centigrade for one month. Aliquot and store at -80 centigrade for 12 months.
<b>Storage Buffer</b>	20mM Tris, 150mM NaCl, pH8.0, containing 1mM EDTA, 1mM DTT, 0.01% SKL, 5% Trehalose and Proclin300.
<b>Reconstitution</b>	Reconstitute in 20mM Tris, 150mM NaCl (pH8.0) to a concentration of 0.1-1.0 mg/mL. Do not vortex.

## GENE INFORMATION

<b>Gene Name</b>	SMPD4 sphingomyelin phosphodiesterase 4, neutral membrane (neutral sphingomyelinase-3) [ Homo sapiens (human) ]
<b>Official Symbol</b>	SMPD4
<b>Synonyms</b>	SMPD4; sphingomyelin phosphodiesterase 4, neutral membrane (neutral sphingomyelinase-3); sphingomyelin phosphodiesterase 4; FLJ20297; FLJ20756; KIAA1418; NET13; nSMase 3; NSMASE3; SKNY protein; neutral sphingomyelinase 3; neutral sphingomyelinase III; NSMASE-3;
<b>Gene ID</b>	55627
<b>mRNA Refseq</b>	NM_001171083
<b>Protein Refseq</b>	NP_001164554

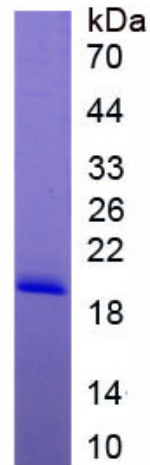
 Tel: 1-631-559-9269 1-516-512-3133

 Email: [info@creative-biomart.com](mailto:info@creative-biomart.com)  Fax: 1-631-938-8127

 45-1 Ramsey Road, Shirley, NY 11967, USA

MIM 610457

UniProt ID Q9NXE4



Tel: 1-631-559-9269 1-516-512-3133

Email: [info@creative-biomart.com](mailto:info@creative-biomart.com) Fax: 1-631-938-8127

45-1 Ramsey Road, Shirley, NY 11967, USA