

# Recombinant Human SMPDL3B Protein, Myc/DDK-tagged, C13 and N15-labeled

**Cat. No.** SMPDL3B-3075H    **Lot. No.** (See product label)

## SPECIFICATION

<b>Product Overview</b>	SMPDL3B MS Standard C13 and N15-labeled recombinant protein (NP_001009568) with a C-terminal MYC/DDK tag, was expressed in HEK293 cells.
<b>Species</b>	Human
<b>Source</b>	HEK293
<b>Description</b>	Lipid-modulating phosphodiesterase. Active on the surface of macrophages and dendritic cells and strongly influences macrophage lipid composition and membrane fluidity. Acts as a negative regulator of Toll-like receptor signaling. Has in vitro phosphodiesterase activity, but the physiological substrate is unknown. Lacks activity with phosphocholine-containing lipids, but can cleave CDP-choline, and can release phosphate from ATP and ADP (in vitro).
<b>Molecular Mass</b>	41.7 kDa
<b>AA Sequence</b>	<p>MRLLEWLIFLANWGGARAEPGKFWHIADLHLDPDYKVSKDPPFQVCPSAGSQPVPDA          GPWGDYLCDSPWALINSSIAMKEIEPEPDFILWTGDDTPHPVDEKLGEAAVLEIVER          LTKLIREVFPDTKVYAALGNHDFHPKNQFPAGSNNIYNQIAELWKPWLSNESIALFKK          GAFYCEKLPGPSGAGRIVVLNTNLYYTSNALTADMADPGQQFQWLEDVLT DASKAG          DMVYIVGHVPPGFFEKTQNKAWFREGFNEKYLVVVRKHHRVIAGQFFGHHHTDSFR          MLYDDAGVPISAMFITPGVTPWKTTLPGVVNGANNPAIRVFEYDRATLSLKVRSPA          ARGGGWEGLKCITTFPHSQLIHLPLTTEPQEGTRTRPLEQKLISEEDLAANDILDYKD</p>

 Tel: 1-631-559-9269    1-516-512-3133

 Email: [info@creative-biomart.com](mailto:info@creative-biomart.com)     Fax: 1-631-938-8127

 45-1 Ramsey Road, Shirley, NY 11967, USA

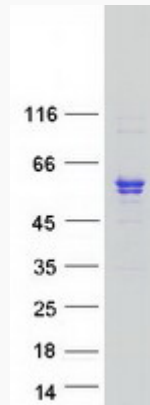
	DDDKV
<b>Purity</b>	> 80% as determined by SDS-PAGE and Coomassie blue staining
<b>Stability</b>	Stable for 3 months from receipt of products under proper storage and handling conditions.
<b>Storage</b>	Store at -80 centigrade. Avoid repeated freeze-thaw cycles.
<b>Concentration</b>	50 µg/mL as determined by BCA
<b>Storage Buffer</b>	100 mM glycine, 25 mM Tris-HCl, pH 7.3.
<b>GENE INFORMATION</b>	
<b>Gene Name</b>	SMPDL3B sphingomyelin phosphodiesterase acid like 3B [ Homo sapiens (human) ]
<b>Official Symbol</b>	SMPDL3B
<b>Synonyms</b>	SMPDL3B; sphingomyelin phosphodiesterase, acid-like 3B; acid sphingomyelinase-like phosphodiesterase 3b; ASML3B; ASM-like phosphodiesterase 3b;
<b>Gene ID</b>	27293
<b>mRNA Refseq</b>	NM_001009568
<b>Protein Refseq</b>	NP_001009568
<b>MIM</b>	617737
<b>UniProt ID</b>	Q92485

 Tel: 1-631-559-9269 1-516-512-3133

 Email: [info@creative-biomart.com](mailto:info@creative-biomart.com)  Fax: 1-631-938-8127

 45-1 Ramsey Road, Shirley, NY 11967, USA

**SDS-PAGE**



 Tel: 1-631-559-9269 1-516-512-3133

 Email: [info@creative-biomart.com](mailto:info@creative-biomart.com)  Fax: 1-631-938-8127

 45-1 Ramsey Road, Shirley, NY 11967, USA