

# Recombinant Human SMPX Protein, Myc/DDK-tagged, C13 and N15-labeled

**Cat. No.** SMPX-6321H    **Lot. No.** (See product label)

## SPECIFICATION

<b>Product Overview</b>	SMPX MS Standard C13 and N15-labeled recombinant protein (NP_055147) with a C-terminal MYC/DDK tag, was expressed in HEK293 cells.
<b>Species</b>	Human
<b>Source</b>	HEK293
<b>Description</b>	This gene encodes a small protein that has no known functional domains. Mutations in this gene are a cause of X-linked deafness-4, and the encoded protein may play a role in the maintenance of inner ear cells subjected to mechanical stress. Alternatively spliced transcript variants have been observed for this gene.
<b>Molecular Mass</b>	9.6 kDa
<b>AA Sequence</b>	MNMSKQPVS NVRAIQANINIPMGAFRPGAGQPPRRKECTPEVEEGVPPTSDEEKKP IPGAKKLPGPAVNLSEIQNIKSELKYVPKAEQTRTRPLEQKLISEEDLAANDILDYKDD DDKV
<b>Purity</b>	> 80% as determined by SDS-PAGE and Coomassie blue staining
<b>Stability</b>	Stable for 3 months from receipt of products under proper storage and handling conditions.
<b>Storage</b>	Store at -80 centigrade. Avoid repeated freeze-thaw cycles.

 Tel: 1-631-559-9269    1-516-512-3133

 Email: [info@creative-biomart.com](mailto:info@creative-biomart.com)     Fax: 1-631-938-8127

 45-1 Ramsey Road, Shirley, NY 11967, USA

**Concentration** 50 µg/mL as determined by BCA

**Storage Buffer** 100 mM glycine, 25 mM Tris-HCl, pH 7.3.

## GENE INFORMATION

**Gene Name** SMPX small muscle protein X-linked [ Homo sapiens (human) ]

**Official Symbol** SMPX

**Synonyms** SMPX; small muscle protein X-linked; Csl; DFN6; DFNX4; Chisel; small muscular protein; deafness, X-linked 6, sensorineural; stretch-responsive skeletal muscle protein

**Gene ID** 23676

**mRNA Refseq** NM\_014332

**Protein Refseq** NP\_055147

**MIM** 300226

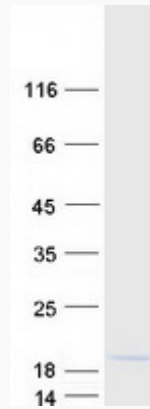
**UniProt ID** Q9UHP9

 Tel: 1-631-559-9269 1-516-512-3133

 Email: [info@creative-biomart.com](mailto:info@creative-biomart.com)  Fax: 1-631-938-8127

 45-1 Ramsey Road, Shirley, NY 11967, USA

SDS-PAGE



 Tel: 1-631-559-9269 1-516-512-3133

 Email: [info@creative-biomart.com](mailto:info@creative-biomart.com)  Fax: 1-631-938-8127

 45-1 Ramsey Road, Shirley, NY 11967, USA