

Recombinant Full Length Human SMTN Protein, C-Flag-tagged

Cat. No. SMTN-2075HFL Lot. No. (See product label)

SPECIFICATION

Product Overview	Recombinant Full Length Human SMTN Protein, fused to Flag-tag at C-terminus, was expressed in Mammalian cells.
Species	Human
Source	Mammalian Cells
Description	<p>This gene encodes a structural protein that is found exclusively in contractile smooth muscle cells. It associates with stress fibers and constitutes part of the cytoskeleton.</p> <p>This gene is localized to chromosome 22q12.3, distal to the TUPLE1 locus and outside the DiGeorge syndrome deletion. Alternative splicing of this gene results in multiple transcript variants encoding distinct isoforms.</p>
Form	25 mM Tris HCl, pH 7.3, 100 mM glycine, 10% glycerol.
Molecular Mass	98.7 kDa
AA Sequence	<p>MADEALAGLDEGALRKLLEVTADLAERRRIRSAIRELQRQELEREEEEALASKRFRAE RQDNKENWLHSQQ REAEQRAALARLAGQLESMDVVEELTALLRSAGEYEERKLIR AAIRRVRAQEIEAATLAGRLYSGRPNSG SREDSKGLAAHRLEQCEVPEREEQEQQQA EVSKPTPTPEGTSQDVTTVTLRLRAPPGSTSSSPASPSSSPT PASPEPPLEPAEAQC LTAEVPGSPEPPPSPPKTTSPPEQESPTLPSTEGQVVNKLLSGPKETPAAQSPTR G PSDTKRADVAGPRPCQRSLSVLSPRQPAQNRESTPLASGPSSFQRAGSVRDRVHK FTSDSPMAARLQDG TPQAALSPLTPARLLGPSLTSTTPASSSSGSSSRGPSDTSSR FSKEQRGVAQPLAQLRSCPQEEGPRGRG LAARPLENRAGGPVAREEPEGAPLPV</p>

 Tel: 1-631-559-9269 1-516-512-3133

 Email: info@creative-biomart.com  Fax: 1-631-938-8127

 45-1 Ramsey Road, Shirley, NY 11967, USA

AVGTAEPGGSMKTTFTTIEIKDGRGQASTGRVLLPTGNQRAELTL GLRAPPTLLSTSS
 GGKSTITRVNSPGTLARLGSVTHVTSFSHAPPSSRGGCSIKMEPEPAEPLAAAVEAA
 NGAEQTRVNKAPEGRSPLSAEELMTIEDEGVLDKMLDQSTDFEERKLIRAALRELKQ
 RKRDRQDKERERR LQEARGRPGEGRGNTATETTTTRHSQRAADGSAVSTVTKTER
 LVHSNDGTRTARTTTVESSFVRRSENGSG STMMQTKTFSSSSSSKKMGSIFDRED
 QASPRAGSLAALEKRQAEKKKELMKAQSLPKTSASQARKAMIEK LEKEGAAGSPG
 GPRAAVQRSTSFGVNPANSIKQMLLDWCRAKTRGYEHVDIQNFSSSWSDGMAFCA
 LVHN FFPEAFDYGQLSPQNRNQNFVAFSSAETHADCPQLLDTEDMVRLREPDWK
 CVYTYIQEFYRCLVQKGLV KTKKS TRTRPLEQKLISEEDLAANDILDYKDDDDKV

Purity > 80% as determined by SDS-PAGE and Coomassie blue staining.

Stability Stable for 12 months from the date of receipt of the product under proper storage and handling conditions. Avoid repeated freeze-thaw cycles.

Storage Store at -80 centigrade.

Concentration >50 ug/mL as determined by microplate BCA method.

Preparation Recombinant protein was captured through anti-DDK affinity column followed by conventional chromatography steps.

Full Length Full L.

GENE INFORMATION

Gene Name SMTN smoothelin [Homo sapiens (human)]

Official Symbol SMTN

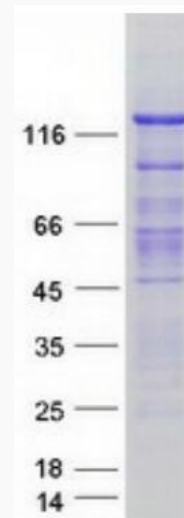
Synonyms FLJ35168; FLJ35365; FLJ35620; FLJ38597

 Tel: 1-631-559-9269 1-516-512-3133

 Email: info@creative-biomart.com  Fax: 1-631-938-8127

 45-1 Ramsey Road, Shirley, NY 11967, USA

Gene ID	6525
mRNA Refseq	NM_134269.3
Protein Refseq	NP_599031.1
MIM	602127
UniProt ID	P53814



Coomassie blue staining of purified SMTN protein.

 Tel: 1-631-559-9269 1-516-512-3133

 Email: info@creative-biomart.com  Fax: 1-631-938-8127

 45-1 Ramsey Road, Shirley, NY 11967, USA