

Recombinant Mouse SMURF1 protein, His-tagged

Cat. No. SMURF1-4325H Lot. No. (See product label)

SPECIFICATION

Product Overview	Recombinant Mouse SMURF1 protein(Q9HCE7)(198-374aa), fused with N-terminal His tag, was expressed in E.coli.
Species	Mouse
Source	E.coli
ProteinLength	198-374aa
Form	If the delivery form is liquid, the default storage buffer is Tris/PBS-based buffer, 5%-50% glycerol. If the delivery form is lyophilized powder, the buffer before lyophilization is Tris/PBS-based buffer, 6% Trehalose, pH 8.0.
Molecular Mass	24.1 kDa
Purity	Greater than 90% as determined by SDS-PAGE.
Storage	Store at -20°C/-80°C upon receipt, aliquoting is necessary for mutiple use. Avoid repeated freeze-thaw cycles.
Reconstitution	We recommend that this vial be briefly centrifuged prior to opening to bring the contents to the bottom. Please reconstitute protein in deionized sterile water to a concentration of 0.1-1.0 mg/mL. We recommend to add 5-50% of glycerol (final concentration) and aliquot for long-term storage at -20°C/-80°C.

 Tel: 1-631-559-9269 1-516-512-3133

 Email: info@creative-biomart.com  Fax: 1-631-938-8127

 45-1 Ramsey Road, Shirley, NY 11967, USA

AA Sequence

VESPSQDQRLQAQRLRNPDVRGSLQTPQNRPHGHQSPELPEGYEQRTTVQGQVY
FLHTQTGVSTWHDPRI PPSGTIPGGDAAFLYEFLQGH TSEPRDLNSVNCDELGPL
PPGWEVRSTVSGRIYFVDHNNRTTQFTDPR LHHIMNHQCQLKEPSQPLPLPSEGSL
EDEELPAQRY

GENE INFORMATION**Gene Name**

Smurf1 SMAD specific E3 ubiquitin protein ligase 1 [Mus musculus]

Official Symbol

SMURF1

Synonyms

SMURF1; SMAD specific E3 ubiquitin protein ligase 1; E3 ubiquitin-protein ligase
SMURF1; Smad ubiquitination regulatory factor 1; SMAD-specific E3 ubiquitin-protein
ligase 1; mKIAA1625; 4930431E10Rik;

Gene ID

75788

mRNA Refseq

NM_001038627

Protein Refseq

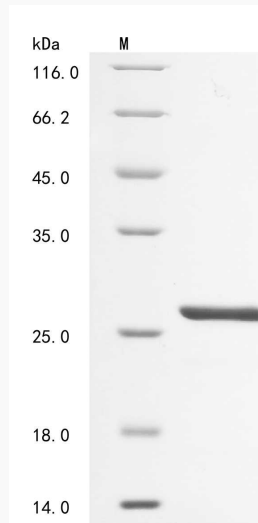
NP_001033716

 Tel: 1-631-559-9269 1-516-512-3133

 Email: info@creative-biomart.com  Fax: 1-631-938-8127

 45-1 Ramsey Road, Shirley, NY 11967, USA

SDS-PAGE



 Tel: 1-631-559-9269 1-516-512-3133

 Email: info@creative-biomart.com  Fax: 1-631-938-8127

 45-1 Ramsey Road, Shirley, NY 11967, USA