

# Recombinant Human SMURF2 Protein (His246-Glu400), N-His tagged

Cat. No. SMURF2-6287H Lot. No. (See product label)

## SPECIFICATION

<b>Product Overview</b>	Recombinant human SMURF2 (His246-Glu400) fused with the N-His tag was expressed in E. coli.
<b>Species</b>	Human
<b>Source</b>	E.coli
<b>ProteinLength</b>	His246-Glu400
<b>Form</b>	Lyophilized powder/frozen liquid
<b>Molecular Mass</b>	20.34 kDa
<b>Purity</b>	> 90 % as determined by SDS-PAGE
<b>Notes</b>	For research use only.
<b>Storage</b>	Use a manual defrost freezer and avoid repeated freeze thaw cycles. Store at 2 to 8 centigrade for one week. Store at -20 to -80 centigrade for twelve months from the date of receipt.
<b>Storage Buffer</b>	0.01M PBS, pH 7.4, 0.02 % NLS
<b>Reconstitution</b>	Reconstitute in sterile water for a stock solution.

 Tel: 1-631-559-9269 1-516-512-3133

 Email: [info@creative-biomart.com](mailto:info@creative-biomart.com)  Fax: 1-631-938-8127

 45-1 Ramsey Road, Shirley, NY 11967, USA

**Shipping** They are shipped out with dry ice/blue ice unless customers require otherwise.

## GENE INFORMATION

**Gene Name** SMURF2 SMAD specific E3 ubiquitin protein ligase 2 [ Homo sapiens (human) ]

**Official Symbol** SMURF2

**Synonyms** SMURF2; SMAD specific E3 ubiquitin protein ligase 2; E3 ubiquitin-protein ligase SMURF2; hSMURF2; E3 ubiquitin ligase SMURF2; SMAD ubiquitination regulatory factor 2; SMAD-specific E3 ubiquitin-protein ligase 2; MGC138150; DKFZp686F0270;

**Gene ID** 64750

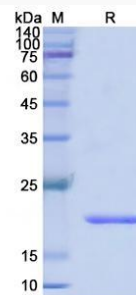
**mRNA Refseq** NM\_022739

**Protein Refseq** NP\_073576

**MIM** 605532

**UniProt ID** Q9HAU4

### SDS-PAGE



 Tel: 1-631-559-9269 1-516-512-3133

 Email: [info@creative-biomart.com](mailto:info@creative-biomart.com)  Fax: 1-631-938-8127

 45-1 Ramsey Road, Shirley, NY 11967, USA