

Recombinant Full Length Human SMURF2 Protein, C-Flag-tagged

Cat. No. SMURF2-980HFL **Lot. No.** (See product label)

SPECIFICATION

Product Overview	Recombinant Full Length Human SMURF2 Protein, fused to Flag-tag at C-terminus, was expressed in Mammalian cells.
Species	Human
Source	Mammalian Cells
Description	Enables SMAD binding activity; identical protein binding activity; and ubiquitin-protein transferase activity. Involved in negative regulation of transforming growth factor beta receptor signaling pathway; positive regulation of trophoblast cell migration; and ubiquitin-dependent SMAD protein catabolic process. Located in nuclear speck. Part of ubiquitin ligase complex.
Form	25 mM Tris HCl, pH 7.3, 100 mM glycine, 10% glycerol.
Molecular Mass	86 kDa
AA Sequence	MSNPGGRRNGPVKLRRLTVLCAKNLVKKDFFRLPDPFAKVVVDGSGQCHSTDTVKN TLDPKWNQHYDLYIG KSDSVTISVWNHKKIHKKQGAGFLGCVRLLSNAINRLKDTGY QRLDLCKLGPNDNDTVRGQIVVSLQSRD RIGTGGQVVDCSRFLDNDLPDGWEERR TASGRIQYLNHITRTTQWERPTRPASEYSSPGRPLSCFVDENT PISGTNGATCGQS SDPRLAERRVRSQRHRNYMSRTHLHTPPDLPEGYEQRRTTQQGQVYFLHTQTGVST WH DPRVPRDLSNINCEELGPLPPGWEIRNTATGRVYFVDHNNRTTQFTDPRLSANL HLVLNRQNQLKDQQQQ QVSLCPDDTECLTVPRYKRDVLVQKLKILRQELSQQQPQ

 Tel: 1-631-559-9269 1-516-512-3133

 Email: info@creative-biomart.com  Fax: 1-631-938-8127

 45-1 Ramsey Road, Shirley, NY 11967, USA

AGHCRIEVSREEIFEESYRQVMKMRPKDLWK RLMIKFRGEEGLDYGGVAREWLYLL
 SHEMLNPYYGLFQYSRDDIYTLQINPDSAVNPEHLSYFHFVGRIM GMAVFHGHYID
 GGFTLPFYKQLLGKSITLDDMELVDPDLHNSLVWILENDITGVLDTFCVEHNAYGEII
 QHELKPNGKSIPVNEENKKEYVRLYVNWRFRLRGIEAQFLALQKGFNEVIPQHLLKTF
 DEKELELIICGLG KIDVNDWQVNTLRKHCTPDSNIVKWFVKAVEFFDEERRARLLQF
 VTGSSRVPLQGFKALQGAAGPRLFTI
 HQIDACTNNLPKAHTCFNRIDIPPYESYEKLYEKLLTAIEETCGFAVETRTRPLEQKLIS
 EEDLAANDILDYKDDDDKV

Purity	> 80% as determined by SDS-PAGE and Coomassie blue staining.
Stability	Stable for 12 months from the date of receipt of the product under proper storage and handling conditions. Avoid repeated freeze-thaw cycles.
Storage	Store at -80 centigrade.
Concentration	>50 ug/mL as determined by microplate BCA method.
Preparation	Recombinant protein was captured through anti-DDK affinity column followed by conventional chromatography steps.
Protein Families	Adult stem cells, Druggable Genome, ES Cell Differentiation/IPS, Transcription Factors
Protein Pathways	Allograft rejection, Antigen processing and presentation, Autoimmune thyroid disease, Cell adhesion molecules (CAMs), Endocytosis, Graft-versus-host disease, TGF-beta signaling pathway, Type I diabetes mellitus, Ubiquitin mediated proteolysis, Viral myocarditis
Full Length	Full L.

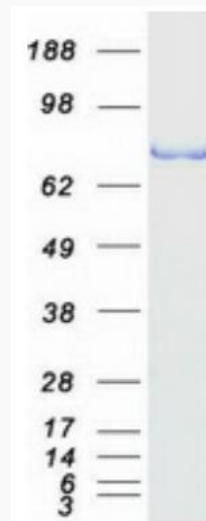
 Tel: 1-631-559-9269 1-516-512-3133

 Email: info@creative-biomart.com  Fax: 1-631-938-8127

 45-1 Ramsey Road, Shirley, NY 11967, USA

GENE INFORMATION

Gene Name	SMURF2 SMAD specific E3 ubiquitin protein ligase 2 [Homo sapiens (human)]
Official Symbol	SMURF2
Synonyms	DKFZp686F0270; MGC138150
Gene ID	64750
mRNA Refseq	NM_022739.4
Protein Refseq	NP_073576.1
MIM	605532
UniProt ID	Q9HAU4



Tel: 1-631-559-9269 1-516-512-3133

Email: info@creative-biomart.com Fax: 1-631-938-8127

45-1 Ramsey Road, Shirley, NY 11967, USA



Coomassie blue staining of purified SMURF2 protein.

 Tel: 1-631-559-9269 1-516-512-3133

 Email: info@creative-biomart.com  Fax: 1-631-938-8127

 45-1 Ramsey Road, Shirley, NY 11967, USA