

# Active Recombinant Human SMYD2 Protein, His/SUMO-tagged

Cat. No. SMYD2-019H Lot. No. (See product label)

## SPECIFICATION

<b>Product Overview</b>	Recombinant Human SMYD2 protein (2-433) with a N-terminal His-SUMO-tag was expressed in E.coli
<b>Species</b>	Human
<b>Source</b>	E.coli
<b>ProteinLength</b>	2-433
<b>Description</b>	SET domain-containing proteins, such as SMYD2, catalyze lysine methylation.
<b>Bio-activity</b>	Activity was demonstrated using a radiometric assay with [3 H]-S-adenosylmethionine incubated with nucleosomes at room temperature overnight in 50 mM Tris-HCl, pH 8.0, containing 150 mM sodium chloride, 3 mM MgCl <sub>2</sub> , and 5% glycerol. Methylated products were separated by SDS-PAGE and visualized by exposure on autoradiographic film.
<b>Molecular Mass</b>	62.7 kDa
<b>Purity</b>	≥80% estimated by SDS-PAGE
<b>Stability</b>	≥ 6 months
<b>Storage</b>	-80 centigrade

 Tel: 1-631-559-9269 1-516-512-3133

 Email: [info@creative-biomart.com](mailto:info@creative-biomart.com)  Fax: 1-631-938-8127

 45-1 Ramsey Road, Shirley, NY 11967, USA

**Storage Buffer** 50 mM Tris-HCl, pH 8.5, containing 400 mM sodium chloride, 1 mM DTT, and 20% glycerol

**Shipping** Dry ice in continental US, may vary elsewhere.

## GENE INFORMATION

**Gene Name** [SMYD2 SET and MYND domain containing 2 \[ Homo sapiens \(human\) \]](#)

**Official Symbol** [SMYD2](#)

**Synonyms** SMYD2; SET and MYND domain containing 2; KMT3C; HSKM-B; ZMYND14; N-lysine methyltransferase SMYD2; SET and MYND domain-containing protein 2; histone methyltransferase SMYD2; lysine N-methyltransferase 3C; zinc finger, MYND domain containing 14; EC 2.1.1.354

**Gene ID** [56950](#)

**mRNA Refseq** [NM\\_020197](#)

**Protein Refseq** [NP\\_064582](#)

**MIM** [610663](#)

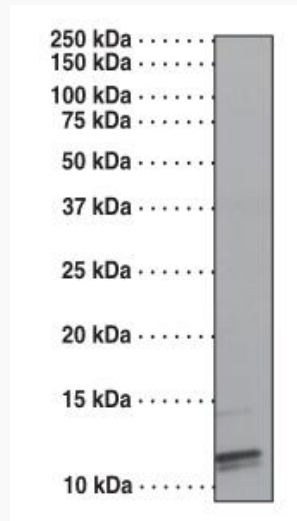
**UniProt ID** [Q9NRG4](#)

 Tel: 1-631-559-9269 1-516-512-3133

 Email: [info@creative-biomart.com](mailto:info@creative-biomart.com)  Fax: 1-631-938-8127

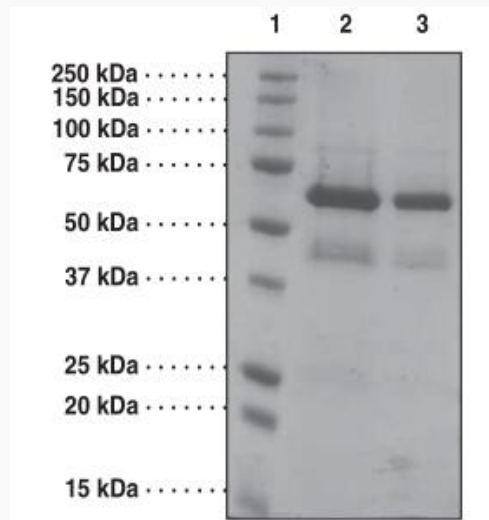
 45-1 Ramsey Road, Shirley, NY 11967, USA

**SDS-PAGE Analysis  
of SMYD2**



Autoradiograph of nucleosomes separated on SDS-PAGE following reaction with [<sup>3</sup>H]-SAM and 2 μM SMYD2.

**SDS-PAGE Analysis  
of SMYD2**



Lane 1: MW Markers

Lane 2: SMYD2 (4 μg)

Tel: 1-631-559-9269 1-516-512-3133

Email: [info@creative-biomart.com](mailto:info@creative-biomart.com) Fax: 1-631-938-8127

45-1 Ramsey Road, Shirley, NY 11967, USA



Lane 3: SMYD2 (2 g)

 Tel: 1-631-559-9269 1-516-512-3133

 Email: [info@creative-biomart.com](mailto:info@creative-biomart.com)  Fax: 1-631-938-8127

 45-1 Ramsey Road, Shirley, NY 11967, USA