

Active Recombinant Human SMYD2 Protein, His/SUMO-tagged

Cat. No. SMYD2-049H Lot. No. (See product label)

SPECIFICATION

Product Overview	Recombinant N-terminal His- and SUMOpro-tagged human SMYD2 protein was expressed in E. coli.
Species	Human
Source	E.coli
Description	SET domain-containing proteins, such as SMYD2, catalyze lysine methylation.
Bio-activity	Activity was demonstrated using a radiometric assay with [3H]-S-adenosylmethionine incubated with nucleosomes at room temperature overnight in 50 mM Tris-HCl, pH 8.0, containing 150 mM sodium chloride, 3 mM MgCl ₂ , and 5% glycerol. Methylated products were separated by SDS-PAGE and visualized by exposure on autoradiographic film.
Molecular Mass	62.7 kDa
Purity	≥80%
Stability	≥ 2 years
Storage	At -80 centigrade.
Storage Buffer	50 mM Tris-HCl, pH 8.5, containing 400 mM sodium chloride, 1 mM DTT, and 20% glycerol

 Tel: 1-631-559-9269 1-516-512-3133

 Email: info@creative-biomart.com  Fax: 1-631-938-8127

 45-1 Ramsey Road, Shirley, NY 11967, USA

GENE INFORMATION

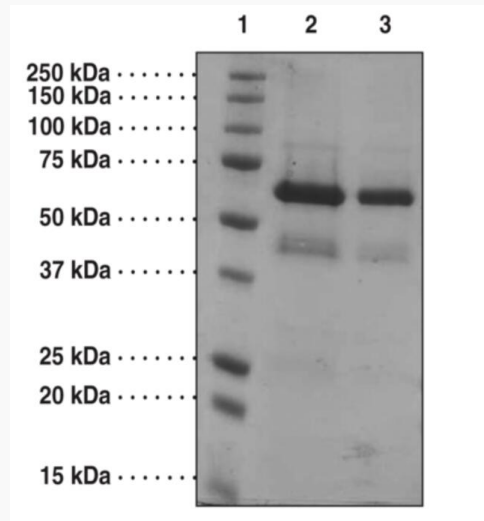
Gene Name	SMYD2 SET and MYND domain containing 2 [Homo sapiens (human)]
Official Symbol	SMYD2
Synonyms	SMYD2; SET and MYND domain containing 2; KMT3C; HSKM-B; ZMYND14; N-lysine methyltransferase SMYD2; SET and MYND domain-containing protein 2; histone methyltransferase SMYD2; lysine N-methyltransferase 3C; zinc finger, MYND domain containing 14; EC 2.1.1.354
Gene ID	56950
mRNA Refseq	NM_020197
Protein Refseq	NP_064582
MIM	610663
UniProt ID	Q9NRG4

 Tel: 1-631-559-9269 1-516-512-3133

 Email: info@creative-biomart.com  Fax: 1-631-938-8127

 45-1 Ramsey Road, Shirley, NY 11967, USA

**SDS-PAGE analysis
of SMYD2**



Lane 1: MW Markers

Lane 2: SMYD2 (4 µg)

Lane 3: SMYD2 (2 µg)

 Tel: 1-631-559-9269 1-516-512-3133

 Email: info@creative-biomart.com  Fax: 1-631-938-8127

 45-1 Ramsey Road, Shirley, NY 11967, USA