

Recombinant Human SMYD3 Protein, His/SUMO-tagged

Cat. No. SMYD3-024H Lot. No. (See product label)

SPECIFICATION

Product Overview	Recombinant Human SMYD3 protein (35-428) with a N-terminal His-SUMO-tag was expressed in E.coli
Species	Human
Source	E.coli
ProteinLength	35-428
Description	This gene encodes a histone methyltransferase which functions in RNA polymerase II complexes by an interaction with a specific RNA helicase. Multiple transcript variants encoding different isoforms have been found for this gene.
Molecular Mass	58.5 kDa
Purity	≥60% estimated by SDS-PAGE
Stability	≥ 9 months
Storage	-80 centigrade
Storage Buffer	50 mM Tris-HCl, pH 8.0, containing 150 mM sodium chloride, and 20% glycerol
Shipping	Dry ice in continental US, may vary elsewhere.

 Tel: 1-631-559-9269 1-516-512-3133

 Email: info@creative-biomart.com  Fax: 1-631-938-8127

 45-1 Ramsey Road, Shirley, NY 11967, USA

GENE INFORMATION

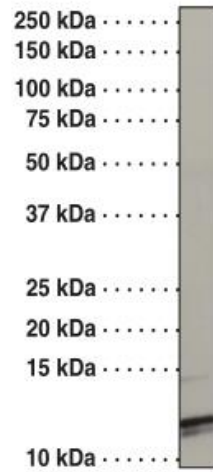
Gene Name	SET and MYND domain containing 3 [Homo sapiens (human)]
Official Symbol	SMYD3
Synonyms	SMYD3; SET and MYND domain containing 3; KMT3E; ZMYND1; ZNFN3A1; bA74P14.1; histone-lysine N-methyltransferase SMYD3; SET and MYND domain-containing protein 3; bA74P14.1 (novel protein); zinc finger MYND domain-containing protein 1; zinc finger protein, subfamily 3A (MYND domain containing), 1; zinc finger, MYND domain containing 1; EC 2.1.1.354
Gene ID	64754
mRNA Refseq	NM_001167740
Protein Refseq	NP_001161212
MIM	608783
UniProt ID	Q9H7B4

 Tel: 1-631-559-9269 1-516-512-3133

 Email: info@creative-biomart.com  Fax: 1-631-938-8127

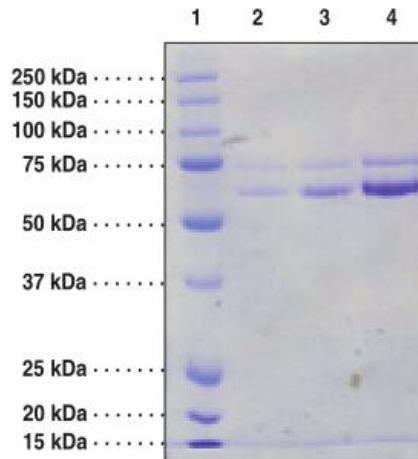
 45-1 Ramsey Road, Shirley, NY 11967, USA

**SDS-PAGE Analysis
of SMYD3**



Autoradiograph of nucleosomes separated on SDS-PAGE following reaction with [³H]-SAM and 2 μM SMYD3

**SDS-PAGE Analysis
of SMYD3**



Lane 1: MW Markers

Lane 2: SMYD3 (1 g)

Tel: 1-631-559-9269 1-516-512-3133


Email: info@creative-biomart.com Fax: 1-631-938-8127

45-1 Ramsey Road, Shirley, NY 11967, USA




Lane 3: SMYD3 (2 g)

Lane 4: SMYD3 (5 g)

 Tel: 1-631-559-9269 1-516-512-3133

 Email: info@creative-biomart.com  Fax: 1-631-938-8127

 45-1 Ramsey Road, Shirley, NY 11967, USA