

Recombinant Human SMYD3 protein, GST-tagged

Cat. No. SMYD3-920H Lot. No. (See product label)

SPECIFICATION

Product Overview	Recombinant Human SMYD3 protein(NP_073580.1) (Lys 35-Ser 369) was expressed in Insect Cells, fused with the GST tag at the N-terminus.
Species	Human
Source	Insect Cells
ProteinLength	35-369 aa
Form	Lyophilized from sterile 20mM Tris, 150mM NaCl, 0.5mM DTT, 0.5mM GSH, pH 8.0.
Molecular Mass	The recombinant human SMYD3/GST chimera consists of 559 amino acids and predicts a molecular mass of 656 kDa. It migrates as an approxiamtely 58 kDa band in SDS-PAGE under reducing conditions.
Endotoxin	< 1.0 EU per µg of the protein as determined by the LAL method.
Purity	> 88 % as determined by SDS-PAGE
Storage	Store it under sterile conditions at -20°C to -80°C upon receiving. Recommend to aliquot the protein into smaller quantities for optimal storage. Avoid repeated freeze-thaw cycles.
Reconstitution	It is recommended that sterile water be added to the vial to prepare a stock solution of 0.2 ug/ul. Centrifuge the vial at 4°C before opening to recover the entire contents.

 Tel: 1-631-559-9269 1-516-512-3133

 Email: info@creative-biomart.com  Fax: 1-631-938-8127

 45-1 Ramsey Road, Shirley, NY 11967, USA

protein Refseq-Weblink http://www.ncbi.nlm.nih.gov/protein/NP_001161212.1

Unit ID Q9H7B4

Unit ID-Weblink <https://www.uniprot.org/uniprotkb/Q9H7B4>

GENE INFORMATION

Gene Name [SMYD3 SET and MYND domain containing 3 \[Homo sapiens \]](#)

Official Symbol [SMYD3](#)

Synonyms SMYD3; SET and MYND domain containing 3; zinc finger, MYND domain containing 1, ZMYND1, ZNFN3A1; SET and MYND domain-containing protein 3; KMT3E; bA74P14.1 (novel protein); zinc finger, MYND domain containing 1; zinc finger MYND domain-containing protein 1; zinc finger protein, subfamily 3A (MYND domain containing), 1; ZMYND1; ZNFN3A1; bA74P14.1; FLJ21080; MGC104324;

Gene ID [64754](#)

mRNA Refseq [NM_001167740](#)

protein Refseq NP_001161212

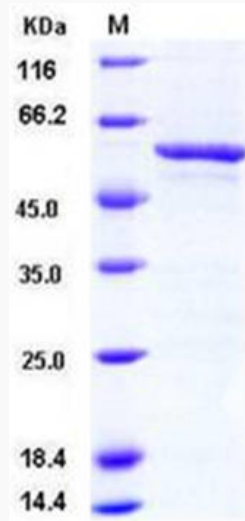
MIM [608783](#)

 Tel: 1-631-559-9269 1-516-512-3133

 Email: info@creative-biomart.com  Fax: 1-631-938-8127

 45-1 Ramsey Road, Shirley, NY 11967, USA

SDS-PAGE



 Tel: 1-631-559-9269 1-516-512-3133

 Email: info@creative-biomart.com  Fax: 1-631-938-8127

 45-1 Ramsey Road, Shirley, NY 11967, USA