

Recombinant Human SNAI2 protein, His-tagged

Cat. No. SNAI2-2711H Lot. No. (See product label)

SPECIFICATION

Product Overview	Recombinant Human SNAI2 protein(1-268 aa), fused with N-terminal His tag, was expressed in E.coli.
Species	Human
Source	E.coli
ProteinLength	1-268 aa
Form	The purified protein was Lyophilized from sterile PBS (58mM Na ₂ HPO ₄ , 17mM NaH ₂ PO ₄ , 68mM NaCl, pH7.4). 5 % trehalose and 5 % mannitol are added as protectant before lyophilization. The elution buffer contain 300mM imidazole.
AASequence	MPRSFLVKKHFNASKKPNYSELDTHTVIISPYLYESYSMPVIPQPEILSSGAYSPITVW TTAAPFHAQLPNGLSPLSGYSSSLGRVSPPPSDTSSKDHSGSESPISDEEERLQSK LSDPHAIEAEKFQCNLCNKTYSTFSGLAKHKQLHCDAQSRKSFSCYCDKEYVSLG ALKMHIRTHTLPCVCKICGKAFSRPWLLQGHIRTHTGEKPFSCPHCNRAFADRSNLR AHLQTHSDVKKYQCKNCSKTFSRMSLLHKHEESGCCVAH
Purity	85%, by SDS-PAGE with Coomassie Brilliant Blue staining.
Storage	Store at 2-8°C for 1-2 weeks. Aliquot and store at -20°C to -80°C for up to 3 months, reconstitution with sterile water and addition of an equal volume of glycerol. Avoid repeat freeze-thaw cycles.

 Tel: 1-631-559-9269 1-516-512-3133

 Email: info@creative-biomart.com  Fax: 1-631-938-8127

 45-1 Ramsey Road, Shirley, NY 11967, USA

Reconstitution

Dissolve the product in 200 µl sterile water to achieve a working concentration of 0.25 g/µl. If experimental compatibility allows, mix the aqueous solution with an equal volume of glycerol (1:1 ratio) after initial reconstitution.

GENE INFORMATION

Gene Name [SNAI2 snail homolog 2 \(Drosophila\) \[Homo sapiens \]](#)

Official Symbol [SNAI2](#)

Synonyms

SNAI2; snail homolog 2 (Drosophila); SLUG, slug homolog, zinc finger protein (chicken); zinc finger protein SNAI2; SLUGH1; SNAIL2; protein snail homolog 2; neural crest transcription factor SLUG; slug (chicken homolog), zinc finger protein; SLUG; WS2D; MGC10182;

Gene ID [6591](#)

mRNA Refseq [NM_003068](#)

Protein Refseq [NP_003059](#)

MIM [602150](#)

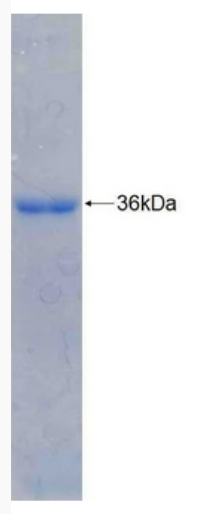
UniProt ID [O43623](#)

 Tel: 1-631-559-9269 1-516-512-3133

 Email: info@creative-biomart.com  Fax: 1-631-938-8127

 45-1 Ramsey Road, Shirley, NY 11967, USA

SDS-PAGE



 Tel: 1-631-559-9269 1-516-512-3133

 Email: info@creative-biomart.com  Fax: 1-631-938-8127

 45-1 Ramsey Road, Shirley, NY 11967, USA