

Recombinant Full Length Human SNAP23 Protein, C-Flag-tagged

Cat. No. SNAP23-841HFL Lot. No. (See product label)

SPECIFICATION

Product Overview

Recombinant Full Length Human SNAP23 Protein, fused to Flag-tag at C-terminus, was expressed in Mammalian cells.

Species

Human

Source

Mammalian Cells

Description

Specificity of vesicular transport is regulated, in part, by the interaction of a vesicle-associated membrane protein termed synaptobrevin/VAMP with a target compartment membrane protein termed syntaxin. These proteins, together with SNAP25 (synaptosome-associated protein of 25 kDa), form a complex which serves as a binding site for the general membrane fusion machinery. Synaptobrevin/VAMP and syntaxin are believed to be involved in vesicular transport in most, if not all cells, while SNAP25 is present almost exclusively in the brain, suggesting that a ubiquitously expressed homolog of SNAP25 exists to facilitate transport vesicle/target membrane fusion in other tissues. The protein encoded by this gene is structurally and functionally similar to SNAP25 and binds tightly to multiple syntaxins and synaptobrevins/VAMPs. It is an essential component of the high affinity receptor for the general membrane fusion machinery and is an important regulator of transport vesicle docking and fusion. Two alternative transcript variants encoding different protein isoforms have been described for this gene.

Form

25 mM Tris HCl, pH 7.3, 100 mM glycine, 10% glycerol.

 Tel: 1-631-559-9269 1-516-512-3133

 Email: info@creative-biomart.com  Fax: 1-631-938-8127

 45-1 Ramsey Road, Shirley, NY 11967, USA

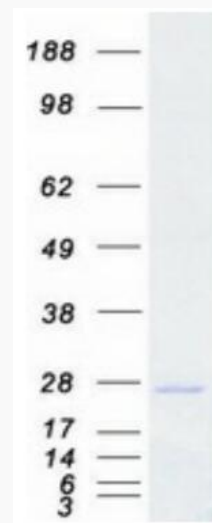
Molecular Mass	23.2 kDa
AA Sequence	MDNLSSEEIQQRAHQITDESLESTRRILGLAIESQDAGIKTITMLDEQKEQLNRIEEGL DQINKDMRETE KTLTELNKCCGLCVPCNRTKNFESGKAYKTTWGDGGENSPCNV VSKQPGPVTNGQLQQPTTGAASGGYI KRITNDAREDEMEENLTQVGSILGNLKDMA LNIGNEIDAQNPQIKRITDKADTNRDRIDIANARAKKLID STRTRPLEQKLISEEDLAANDILDYKDDDDKV
Purity	> 80% as determined by SDS-PAGE and Coomassie blue staining.
Stability	Stable for 12 months from the date of receipt of the product under proper storage and handling conditions. Avoid repeated freeze-thaw cycles.
Storage	Store at -80 centigrade.
Concentration	>50 ug/mL as determined by microplate BCA method.
Preparation	Recombinant protein was captured through anti-DDK affinity column followed by conventional chromatography steps.
Protein Families	Druggable Genome
Protein Pathways	SNARE interactions in vesicular transport
Full Length	Full L.
GENE INFORMATION	
Gene Name	SNAP23 synaptosome associated protein 23 [Homo sapiens (human)]
Official Symbol	SNAP23

 Tel: 1-631-559-9269 1-516-512-3133

 Email: info@creative-biomart.com  Fax: 1-631-938-8127

 45-1 Ramsey Road, Shirley, NY 11967, USA

Synonyms	SNAP-23; SNAP23A; SNAP23B; HsT17016
Gene ID	8773
mRNA Refseq	NM_003825.4
Protein Refseq	NP_003816.2
MIM	602534
UniProt ID	O00161



Coomassie blue staining of purified SNAP23 protein.

 Tel: 1-631-559-9269 1-516-512-3133

 Email: info@creative-biomart.com  Fax: 1-631-938-8127

 45-1 Ramsey Road, Shirley, NY 11967, USA