

Recombinant Human SNAP25 Protein, His tagged

Cat. No. SNAP25-001H Lot. No. (See product label)

SPECIFICATION

Product Overview	Recombinant Human SNAP25 Protein (1-180 aa) with His tag was expressed in E. coli.
Species	Human
Source	E.coli
ProteinLength	1-180 aa
Description	Synaptic vesicle membrane docking and fusion is mediated by SNAREs (soluble N-ethylmaleimide-sensitive factor attachment protein receptors) located on the vesicle membrane (v-SNAREs) and the target membrane (t-SNAREs). The assembled v-SNARE/t-SNARE complex consists of a bundle of four helices, one of which is supplied by v-SNARE and the other three by t-SNARE. For t-SNAREs on the plasma membrane, the protein syntaxin supplies one helix and the protein encoded by this gene contributes the other two. Therefore, this gene product is a presynaptic plasma membrane protein involved in the regulation of neurotransmitter release. Two alternative transcript variants encoding different protein isoforms have been described for this gene.
Molecular Mass	22 kDa
AASequence	MHHHHHHHHHENLYFQGMAEDADMRNELEEMQRRADQLADESLESTRRMLQLVEE SKDAGIRTLVMLDEQGEQLERIEEGMDQINKDMKEAEKNLTDLGKFCGLCVCPCNK LKSSDAYKKAWGNNQDGVVASQPARVVDEREQMAISGGFIRRVTNDARENEMDEN

 Tel: 1-631-559-9269 1-516-512-3133

 Email: info@creative-biomart.com  Fax: 1-631-938-8127

 45-1 Ramsey Road, Shirley, NY 11967, USA

LEQVSGIIGNLRHMALDMGNEIDTQNRQIDR

Purity > 90% by SDS-PAGE

Storage Store it under sterile conditions at -20 to -80 centigrade. It is recommended that the protein be aliquoted for optimal storage. Avoid repeated freeze-thaw cycles.

Concentration 3 mg/mL by BCA

Storage Buffer Sterile 50mM Tris, pH7.5, 150mM NaCl

GENE INFORMATION

Gene Name [SNAP25 synaptosomal-associated protein, 25kDa \[Homo sapiens \(human\) \]](#)

Official Symbol [SNAP25](#)

Synonyms SNAP25; synaptosomal-associated protein, 25kDa; SNAP, synaptosomal associated protein, 25kD; synaptosomal-associated protein 25; bA416N4.2; dJ1068F16.2; resistance to inhibitors of cholinesterase 4 homolog; RIC 4; RIC4; SEC9; SNAP 25; SUP; super protein; SNAP; RIC-4; SNAP-25; FLJ23079

Gene ID [6616](#)

mRNA Refseq [NM_003081](#)

Protein Refseq [NP_003072](#)

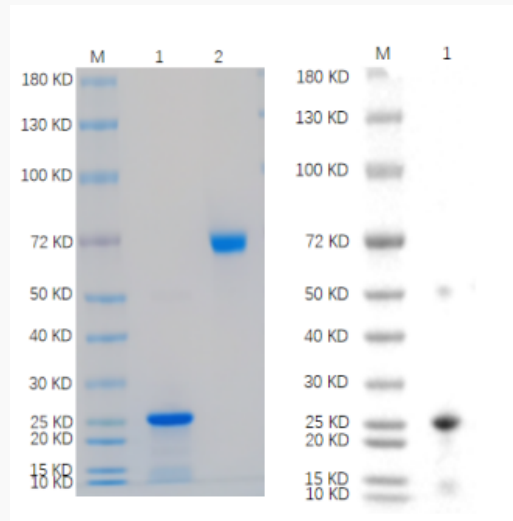
MIM [600322](#)

UniProt ID [P60880](#)

 Tel: 1-631-559-9269 1-516-512-3133

 Email: info@creative-biomart.com  Fax: 1-631-938-8127

 45-1 Ramsey Road, Shirley, NY 11967, USA

SDS-PAGE and WB

Reducing 4%-20% SDS-PAGE (CBB stained) and WB (Anti-His Mouse Monoclonal antibody) analysis profiles of purified SNAP25. 1. SNAP25: 1 µg 2. BSA: 1 µg

 Tel: 1-631-559-9269 1-516-512-3133

 Email: info@creative-biomart.com  Fax: 1-631-938-8127

 45-1 Ramsey Road, Shirley, NY 11967, USA