

Active Recombinant Full Length Human SNAP25 Protein, C-Flag-tagged

Cat. No. SNAP25-136HFL **Lot. No.** (See product label)

SPECIFICATION

Product Overview	Recombinant Full Length Human SNAP25 Protein, fused to Flag-tag at C-terminus, was expressed in Mammalian cells.
Species	Human
Source	Mammalian Cells
Description	Synaptic vesicle membrane docking and fusion is mediated by SNAREs (soluble N-ethylmaleimide-sensitive factor attachment protein receptors) located on the vesicle membrane (v-SNAREs) and the target membrane (t-SNAREs). The assembled v-SNARE/t-SNARE complex consists of a bundle of four helices, one of which is supplied by v-SNARE and the other three by t-SNARE. For t-SNAREs on the plasma membrane, the protein syntaxin supplies one helix and the protein encoded by this gene contributes the other two. Therefore, this gene product is a presynaptic plasma membrane protein involved in the regulation of neurotransmitter release. Two alternative transcript variants encoding different protein isoforms have been described for this gene.
Form	25 mM Tris HCl, pH 7.3, 100 mM glycine, 10% glycerol.
Bio-activity	MS digestion standard
Molecular Mass	23.2 kDa

 Tel: 1-631-559-9269 1-516-512-3133

 Email: info@creative-biomart.com  Fax: 1-631-938-8127

 45-1 Ramsey Road, Shirley, NY 11967, USA

AA Sequence	MAEDADMRNELEEMQRRADQLADESLESTRMLQLVEESKDAGIRTLVMLDEQGE QLDRVEEGMNHINQD MKEAEKNLKDLDGKCCGLFICPCNKLKSSDAYKKAWGNNQD GVVASQPARVVDEREQMAISGGFIRRVTD ARENEMDENLEQVSGIIGNLRHMALD MGNEIDTQNRQIDRIMEKADSNKTRIDEANQRATKMLGSGTRTRPLEQKLISEEDLA ANDILDYKDDDDKV
Purity	> 80% as determined by SDS-PAGE and Coomassie blue staining.
Stability	Stable for 12 months from the date of receipt of the product under proper storage and handling conditions. Avoid repeated freeze-thaw cycles.
Storage	Store at -80 centigrade.
Concentration	>50 ug/mL as determined by microplate BCA method.
Preparation	Recombinant protein was captured through anti-DDK affinity column followed by conventional chromatography steps.
Protein Families	Druggable Genome
Protein Pathways	SNARE interactions in vesicular transport
Full Length	Full L.

GENE INFORMATION

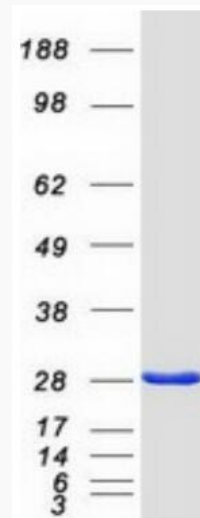
Gene Name	SNAP25 synaptosome associated protein 25 [Homo sapiens (human)]
Official Symbol	SNAP25
Synonyms	SUP; RIC4; SEC9; SNAP; CMS18; RIC-4; SNAP-25; bA416N4.2; dJ1068F16.2

 Tel: 1-631-559-9269 1-516-512-3133

 Email: info@creative-biomart.com  Fax: 1-631-938-8127

 45-1 Ramsey Road, Shirley, NY 11967, USA

Gene ID	6616
mRNA Refseq	NM_003081.5
Protein Refseq	NP_003072.2
MIM	600322
UniProt ID	P60880



Coomassie blue staining of purified SNAP25 protein.

Tel: 1-631-559-9269 1-516-512-3133

Email: info@creative-biomart.com Fax: 1-631-938-8127

45-1 Ramsey Road, Shirley, NY 11967, USA