

Recombinant Human SNAP29 protein, His-tagged

Cat. No. SNAP29-2887H Lot. No. (See product label)

SPECIFICATION

Product Overview	Recombinant Human SNAP29 protein(1-258 aa), fused with N-terminal His tag, was expressed in E.coli.
Species	Human
Source	E.coli
ProteinLength	1-258 aa
Form	The purified protein was lyophilized from sterile phosphate-buffered saline (PBS: 58 mM Na ₂ HPO ₄ , 17 mM NaH ₂ PO ₄ , 68 mM NaCl, pH 7.4). Prior to lyophilization, 5% (w/v) trehalose and 5% (w/v) mannitol were incorporated as cryoprotective excipients.
AASequence	MSAYPKSYNPFDDDDGEDEGARPPWRDARDLPDGPDAPADRQQYLRQEVLRRAE ATAASTSRSLALMYESEKVGVASSEELARQRGVLERTEKMVDKMDQDLKISQKHIN SIKSVFGGLVNYFKSKPVETPPEQNGTLTSQPNNRLKEAISTSKEQEAKYQASHPNL RKLDDTDPVPRGAGSAMSTDAYPKNPHLRAYHQKIDSNLDELSMGLGRLKDIALGM QTEIEEQDDILDRLTTKVDKLDVNIKSTERKVRQL
Purity	85%, by SDS-PAGE with Coomassie Brilliant Blue staining.
Storage	Store at 2-8°C for 1-2 weeks. Aliquot and store at -20°C to -80°C for up to 3 months, reconstitution with sterile water and addition of an equal volume of glycerol. Avoid repeat freeze-thaw cycles.

 Tel: 1-631-559-9269 1-516-512-3133

 Email: info@creative-biomart.com  Fax: 1-631-938-8127

 45-1 Ramsey Road, Shirley, NY 11967, USA

Reconstitution

Dissolve the product in 200 µl sterile water to achieve a working concentration of 0.25 g/µl. If experimental compatibility allows, mix the aqueous solution with an equal volume of glycerol (1:1 ratio) after initial reconstitution.

GENE INFORMATION**Gene Name**

SNAP29 synaptosomal-associated protein, 29kDa [Homo sapiens]

Official Symbol

SNAP29

Synonyms

SNAP29; synaptosomal-associated protein, 29kDa; synaptosomal associated protein, 29kD; synaptosomal-associated protein 29; CEDNIK; SNAP 29; soluble 29 kDa NSF attachment protein; vesicle-membrane fusion protein SNAP-29; SNAP-29; FLJ21051;

Gene ID

9342

mRNA Refseq

NM_004782

Protein Refseq

NP_004773

MIM

604202

UniProt ID

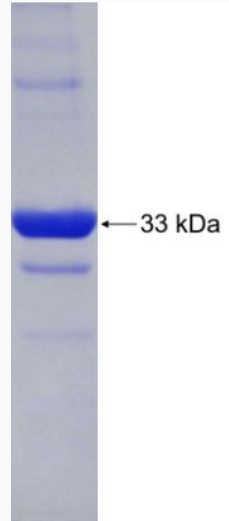
O95721

 Tel: 1-631-559-9269 1-516-512-3133

 Email: info@creative-biomart.com  Fax: 1-631-938-8127

 45-1 Ramsey Road, Shirley, NY 11967, USA

SDS-PAGE



 Tel: 1-631-559-9269 1-516-512-3133

 Email: info@creative-biomart.com  Fax: 1-631-938-8127

 45-1 Ramsey Road, Shirley, NY 11967, USA