

## Recombinant Human SNCA Protein

Cat. No. SNCA-02H Lot. No. (See product label)

### SPECIFICATION

<b>Product Overview</b>	Human Recombinant Alpha Synuclein Oligomers (Dopamine HCL Stabilized) without tag was expressed in E. coli.
<b>Species</b>	Human
<b>Source</b>	E.coli
<b>Description</b>	Alpha-synuclein is a member of the synuclein family, which also includes beta- and gamma-synuclein. Synucleins are abundantly expressed in the brain and alpha- and beta-synuclein inhibit phospholipase D2 selectively. SNCA may serve to integrate presynaptic signaling and membrane trafficking. Defects in SNCA have been implicated in the pathogenesis of Parkinson disease. SNCA peptides are a major component of amyloid plaques in the brains of patients with Alzheimer's disease. Alternatively spliced transcripts encoding different isoforms have been identified for this gene.
<b>Purity</b>	> 95% pure using SDS-PAGE analysis.
<b>Applications</b>	WB, SDS-PAGE, In vivo assay, In vitro assay
<b>Storage</b>	At -80 centigrade.
<b>Storage Buffer</b>	PBS, pH 7.4.
<b>Shipping</b>	Dry Ice.

 Tel: 1-631-559-9269 1-516-512-3133

 Email: [info@creative-biomart.com](mailto:info@creative-biomart.com)  Fax: 1-631-938-8127

 45-1 Ramsey Road, Shirley, NY 11967, USA

Shipping note: Product will be shipped separately from other products purchased in the same order.

## GENE INFORMATION

**Gene Name** SNCA synuclein alpha [ Homo sapiens (human) ]

**Official Symbol** SNCA

**Synonyms** SNCA; synuclein alpha; PD1; NACP; PARK1; PARK4; alpha-synuclein; I+/- synuclein; non A-beta component of AD amyloid; synuclein alpha-140; synuclein, alpha (non A4 component of amyloid precursor); truncated alpha synuclein

**Gene ID** 6622

**mRNA Refseq** NM\_000345

**Protein Refseq** NP\_000336

**MIM** 163890

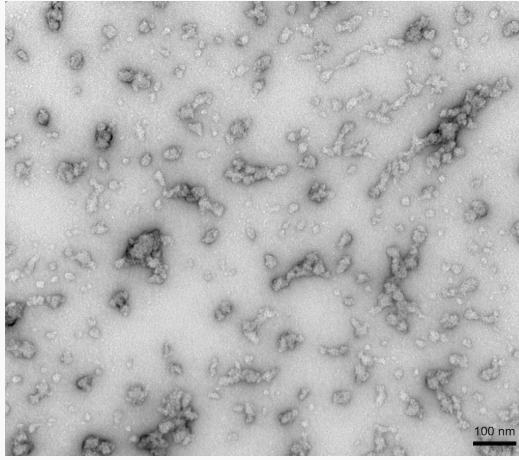
**UniProt ID** P37840

 Tel: 1-631-559-9269 1-516-512-3133

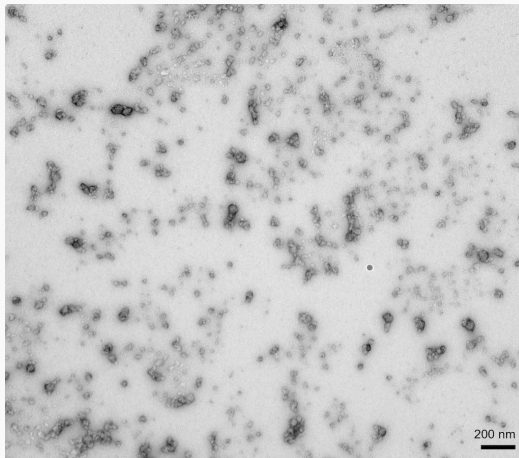
 Email: [info@creative-biomart.com](mailto:info@creative-biomart.com)  Fax: 1-631-938-8127

 45-1 Ramsey Road, Shirley, NY 11967, USA

**TEM of Human  
Recombinant Alpha  
Synuclein Oligomers  
(Dopamine HCL  
Stabilized)**



**TEM of Human  
Recombinant Alpha  
Synuclein Oligomers  
(Dopamine HCL  
Stabilized)**

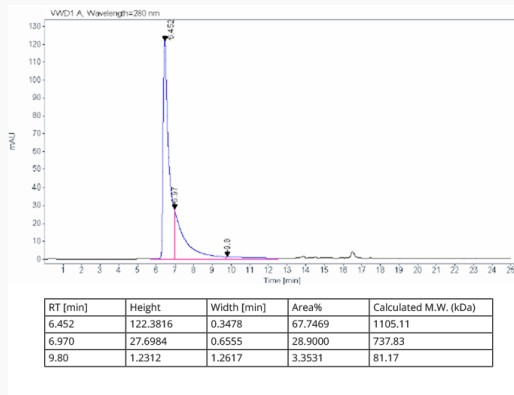


 Tel: 1-631-559-9269 1-516-512-3133

 Email: [info@creative-biomart.com](mailto:info@creative-biomart.com)  Fax: 1-631-938-8127

 45-1 Ramsey Road, Shirley, NY 11967, USA

**HPLC of Alpha Synuclein Protein Oligomers ran down a size exclusion column.**



Wavelength: 280 nm.

**Evaluation of a-syn toxicity on primary mouse cortical neurons.**

Lactate dehydrogenase (LDH) is a soluble enzyme present in the cytosol that is released upon cell death. Toxicity was assessed with an LDH assay and displayed as % of vehicle control (VC). Data are presented as bar graphs and standard deviation. For statistical analysis One-way ANOVA followed by Bonferroni post-hoc test (vs VC) was used. \*\*\*  $p < 0.001$ . Treatment with dopamine-stabilized oligomers was accompanied by a significant increase of LDH release.

**Evaluation of a-syn toxicity on primary mouse cortical neurons.**

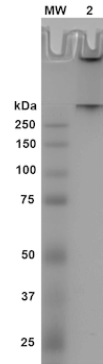
Mitochondrial dehydrogenase activity, which reduces yellow MTT to dark blue formazan crystals, is a reaction that is catalyzed in living cells. Cell viability was assessed with an MTT assay and displayed as % of vehicle control (VC). Data are presented as bar graphs and standard deviation. For statistical analysis One-way ANOVA followed by Bonferroni post-hoc test (vs VC) was used. \*\*  $p < 0.01$ , \*\*\*  $p < 0.001$ . Both types of PFFs led to a decrease of viability of approximately 25% independent of sonication. Dopamine-stabilized oligomers led to the strongest decrease of viability.

Tel: 1-631-559-9269 1-516-512-3133


Email: [info@creative-biomart.com](mailto:info@creative-biomart.com) Fax: 1-631-938-8127

45-1 Ramsey Road, Shirley, NY 11967, USA


**Coomassie gel stain  
of human dopamine-  
stabilized alpha  
synuclein oligomers.**



Load: 2  $\mu$ g

 Tel: 1-631-559-9269 1-516-512-3133

 Email: [info@creative-biomart.com](mailto:info@creative-biomart.com)  Fax: 1-631-938-8127

 45-1 Ramsey Road, Shirley, NY 11967, USA