

Recombinant Human SNCA Protein

Cat. No. SNCA-112H Lot. No. (See product label)

SPECIFICATION

Product Overview	Recombinant Human SNCA Protein was expressed in E.coli.
Species	Human
Source	E.coli
Description	<p>Alpha-synuclein is a member of the synuclein family, which also includes beta- and gamma-synuclein. Synucleins are abundantly expressed in the brain and alpha- and beta-synuclein inhibit phospholipase D2 selectively. SNCA may serve to integrate presynaptic signaling and membrane trafficking. Defects in SNCA have been implicated in the pathogenesis of Parkinson disease. SNCA peptides are a major component of amyloid plaques in the brains of patients with Alzheimer's disease. Alternatively spliced transcripts encoding different isoforms have been identified for this gene.</p>
Form	Supplied as a 0.2 µm filtered solution in PBS, pH8.0.
Molecular Mass	~14.4 kDa
AA Sequence	<p>MDVFMKGLSK AKEGVVAAAE KTKQGVAEAA GKTKEGVLYV GSKTKEGVVH GVATVAEKTK EQVTNVGGAV VTGVTAVAQK TVEGAGSIAA ATGFVKKDQL GKNEEGAPQE GILEDMPVDP DNEAYEMPSE EGYQDYEPEA</p>
Purity	>90%

 Tel: 1-631-559-9269 1-516-512-3133

 Email: info@creative-biomart.com  Fax: 1-631-938-8127

 45-1 Ramsey Road, Shirley, NY 11967, USA

Storage	Store it under sterile conditions at -20 to -80 centigrade. It is recommended that the protein be aliquoted for optimal storage. Avoid repeated freeze-thaw cycles.
----------------	---

Concentration	1.1 mg/ml
----------------------	-----------

GENE INFORMATION

Gene Name	SNCA synuclein alpha [Homo sapiens (human)]
------------------	---

Official Symbol	SNCA
------------------------	------

Synonyms	PD1; NACP; PARK1; PARK4
-----------------	-------------------------

Gene ID	6622
----------------	------

mRNA Refseq	NM_000345
--------------------	-----------

Protein Refseq	NP_000336
-----------------------	-----------

MIM	163890
------------	--------

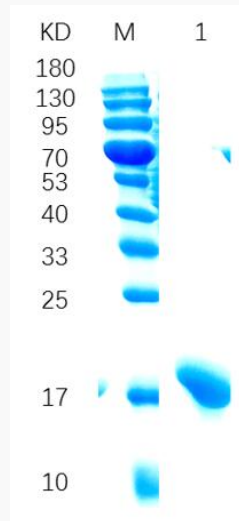
UniProt ID	P37840
-------------------	--------

 Tel: 1-631-559-9269 1-516-512-3133

 Email: info@creative-biomart.com  Fax: 1-631-938-8127

 45-1 Ramsey Road, Shirley, NY 11967, USA

SDS-PAGE



12% reducing SDS-PAGE analysis of purified SNCA (approximately 5 mg protein loaded).

 Tel: 1-631-559-9269 1-516-512-3133

 Email: info@creative-biomart.com  Fax: 1-631-938-8127

 45-1 Ramsey Road, Shirley, NY 11967, USA