

Recombinant Human SNCA Protein, His-tagged

Cat. No. SNCA-2710H Lot. No. (See product label)

SPECIFICATION

Product Overview	Recombinant Human SNCA Protein (Met1-Ala140) with a N-His tag was expressed in E. coli.
Species	Human
Source	E.coli
ProteinLength	Met1-Ala140
Description	<p>Alpha-synuclein is a member of the synuclein family, which also includes beta- and gamma-synuclein. Synucleins are abundantly expressed in the brain and alpha- and beta-synuclein inhibit phospholipase D2 selectively. SNCA may serve to integrate presynaptic signaling and membrane trafficking. Defects in SNCA have been implicated in the pathogenesis of Parkinson disease. SNCA peptides are a major component of amyloid plaques in the brains of patients with Alzheimer's disease. Alternatively spliced transcripts encoding different isoforms have been identified for this gene.</p>
Form	Freeze-dried powder
Molecular Mass	<p>Predicted Molecular Mass: 18.2 kDa Accurate Molecular Mass: 21 kDa</p>
Endotoxin	<1.0 EU per 1g (determined by the LAL method).

 Tel: 1-631-559-9269 1-516-512-3133

 Email: info@creative-biomart.com  Fax: 1-631-938-8127

 45-1 Ramsey Road, Shirley, NY 11967, USA

Purity	> 95%
Applications	Positive Control; Immunogen; SDS-PAGE; WB.
Stability	The thermal stability is described by the loss rate. The loss rate was determined by accelerated thermal degradation test, that is, incubate the protein at 37 centigrade for 48h, and no obvious degradation and precipitation were observed. The loss rate is less than 5% within the expiration date under appropriate storage condition.
Storage	Avoid repeated freeze/thaw cycles. Store at 2-8 centigrade for one month. Aliquot and store at -80 centigrade for 12 months.
Storage Buffer	20mM Tris, 150mM NaCl, pH8.0, containing 1mM EDTA, 1mM DTT, 0.01% SKL, 5% Trehalose and Proclin300.
Reconstitution	Reconstitute in 20mM Tris, 150mM NaCl (pH8.0) to a concentration of 0.1-1.0 mg/mL. Do not vortex.

GENE INFORMATION

Gene Name	SNCA synuclein, alpha (non A4 component of amyloid precursor) [Homo sapiens (human)]
Official Symbol	SNCA
Synonyms	SNCA; synuclein, alpha (non A4 component of amyloid precursor); PARK1, PARK4, Parkinson disease (autosomal dominant, Lewy body) 4; alpha-synuclein; alpha synuclein; NACP; PD1; synuclein alpha-140; non A-beta component of AD amyloid; PARK1; PARK4; MGC110988;
Gene ID	6622

 Tel: 1-631-559-9269 1-516-512-3133

 Email: info@creative-biomart.com  Fax: 1-631-938-8127

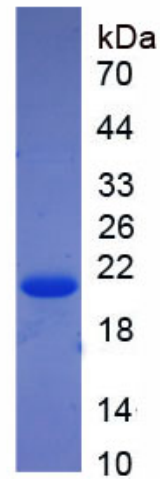
 45-1 Ramsey Road, Shirley, NY 11967, USA

mRNA Refseq [NM_000345](#)

Protein Refseq [NP_000336](#)

MIM [163890](#)

UniProt ID [P37840](#)



 Tel: 1-631-559-9269 1-516-512-3133

 Email: info@creative-biomart.com  Fax: 1-631-938-8127

 45-1 Ramsey Road, Shirley, NY 11967, USA