

## Recombinant Human SNCA protein(11-110 aa), C-His-tagged

Cat. No. SNCA-2744H Lot. No. (See product label)

### SPECIFICATION

<b>Product Overview</b>	Recombinant Human SNCA protein(P37840)(11-110 aa), fused with C-terminal His tag, was expressed in E. coli.
<b>Species</b>	Human
<b>Source</b>	E.coli
<b>ProteinLength</b>	11-110 aa
<b>Form</b>	0.15 M Phosphate buffered saline
<b>Molecular Mass</b>	11 kDa
<b>Storage</b>	Shipped on dry ice. Avoid repeated freeze-thaw cycles. Upon receipt, 2 days when stored at 2 to 8 °C after thawing. Up to 12 months when aliquoted and stored at -20 to -80°C.
<b>Reconstitution</b>	It is recommended that sterile water be added to the vial to prepare a stock solution of 0.2 ug/ul. Centrifuge the vial at 4°C before opening to recover the entire contents.
<b>AA Sequence</b>	AKEGVVAAAEEKTKQGVAEAAAGKTKEGVLYVGSKTKEGVVHGVATVAEKTKEQVTNV GGAVVTGVTAVAQKTVEGAGSIAAATGFVKKDQLGKNEEGAPQE

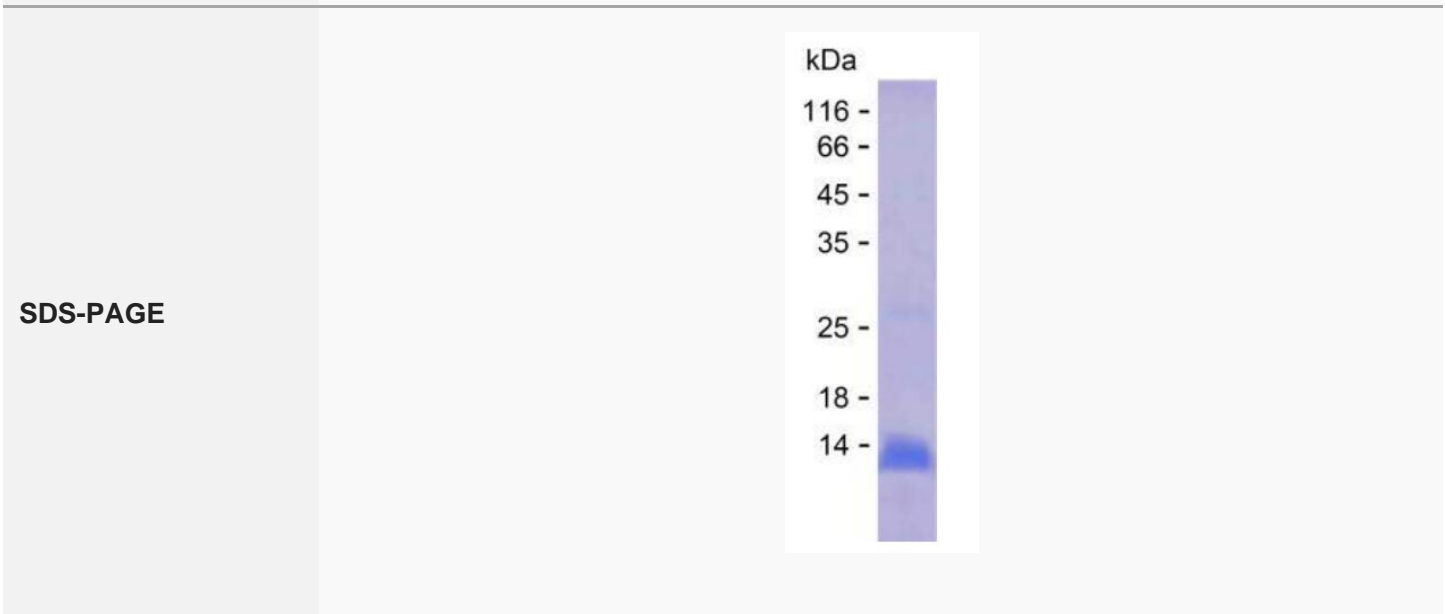
### GENE INFORMATION

 Tel: 1-631-559-9269 1-516-512-3133

 Email: [info@creative-biomart.com](mailto:info@creative-biomart.com)  Fax: 1-631-938-8127

 45-1 Ramsey Road, Shirley, NY 11967, USA

<b>Gene Name</b>	SNCA synuclein, alpha (non A4 component of amyloid precursor) [ Homo sapiens ]
<b>Official Symbol</b>	SNCA
<b>Synonyms</b>	SNCA; synuclein, alpha (non A4 component of amyloid precursor); PARK1, PARK4, Parkinson disease (autosomal dominant, Lewy body) 4; alpha-synuclein; alpha synuclein; NACP; PD1; synuclein alpha-140; non A-beta component of AD amyloid; PARK1; PARK4; MGC110988;
<b>Gene ID</b>	6622
<b>mRNA Refseq</b>	NM_000345
<b>Protein Refseq</b>	NP_000336
<b>MIM</b>	163890
<b>UniProt ID</b>	P37840



Tel: 1-631-559-9269 1-516-512-3133

Email: [info@creative-biomart.com](mailto:info@creative-biomart.com) Fax: 1-631-938-8127

45-1 Ramsey Road, Shirley, NY 11967, USA