

Recombinant Full Length Human SNCA Protein, C-Flag-tagged

Cat. No. SNCA-326HFL **Lot. No.** (See product label)

SPECIFICATION

Product Overview	Recombinant Full Length Human SNCA Protein, fused to Flag-tag at C-terminus, was expressed in Mammalian cells.
Species	Human
Source	Mammalian Cells
Description	Alpha-synuclein is a member of the synuclein family, which also includes beta- and gamma-synuclein. Synucleins are abundantly expressed in the brain and alpha- and beta-synuclein inhibit phospholipase D2 selectively. SNCA may serve to integrate presynaptic signaling and membrane trafficking. Defects in SNCA have been implicated in the pathogenesis of Parkinson disease. SNCA peptides are a major component of amyloid plaques in the brains of patients with Alzheimer's disease. Alternatively spliced transcripts encoding different isoforms have been identified for this gene.
Form	25 mM Tris HCl, pH 7.3, 100 mM glycine, 10% glycerol.
Molecular Mass	14.3 kDa
AA Sequence	MDVFMKGLSKAKEGVVAAAEEKTKQGVAEAAGKTKEGVLYVGSKTKEGVVHGVATV AEKTKEQVTNVGGAV VTGVTAVAQKTVEGAGSIAAATGFVKKDQLGKNEEGAPQE GILEDMPVDPDNEAYEMPSEEGYQDYEPEA TRTRPLEQKLISEEDLAANDILDYKDDDDKV

 Tel: 1-631-559-9269 1-516-512-3133

 Email: info@creative-biomart.com  Fax: 1-631-938-8127

 45-1 Ramsey Road, Shirley, NY 11967, USA

Purity	> 80% as determined by SDS-PAGE and Coomassie blue staining.
Stability	Stable for 12 months from the date of receipt of the product under proper storage and handling conditions. Avoid repeated freeze-thaw cycles.
Storage	Store at -80 centigrade.
Concentration	>50 ug/mL as determined by microplate BCA method.
Preparation	Recombinant protein was captured through anti-DDK affinity column followed by conventional chromatography steps.
Protein Families	Druggable Genome
Protein Pathways	Alzheimer's disease, Parkinson's disease
Full Length	Full L.

GENE INFORMATION

Gene Name	SNCA synuclein alpha [Homo sapiens (human)]
Official Symbol	SNCA
Synonyms	PD1; NACP; PARK1; PARK4
Gene ID	6622
mRNA Refseq	NM_000345.4
Protein Refseq	NP_000336.1

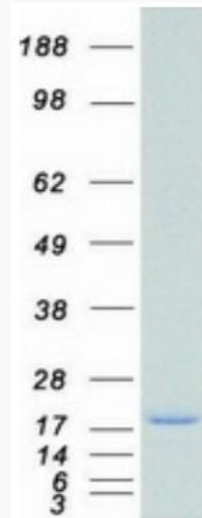
 Tel: 1-631-559-9269 1-516-512-3133

 Email: info@creative-biomart.com  Fax: 1-631-938-8127

 45-1 Ramsey Road, Shirley, NY 11967, USA

MIM 163890

UniProt ID P37840



Coomassie blue staining of purified SNCA protein.

 Tel: 1-631-559-9269 1-516-512-3133

 Email: info@creative-biomart.com  Fax: 1-631-938-8127

 45-1 Ramsey Road, Shirley, NY 11967, USA