

## Recombinant Human SNCA Protein

Cat. No. SNCA-60H Lot. No. (See product label)

### SPECIFICATION

<b>Product Overview</b>	Recombinant Human SNCA Protein was expressed in E. coli.
<b>Species</b>	Human
<b>Source</b>	E.coli
<b>Description</b>	<p>Alpha-Synuclein (SNCA) is a member of the Synuclein family. SNCA is located predominantly in brain and is highly expressed in the mitochondria in olfactory bulb, hippocampus, striatum, and thalamus. SNCA is an important regulatory component of vesicular transport in neuronal cells. It has been predicted that SNCA is related to the pathogenesis of Parkinson's Disease and neurodegenerative disorders. SNCA abnormality and mitochondrial deficiency are two major changes in the brain of patients with Parkinson's disease (PD). Defects in SNCA will lead to Dementia Lewy Body.</p>
<b>Form</b>	Lyophilized from a 0.2 um filtered solution of ultrapure water.
<b>AA Sequence</b>	Met1-Ala140
<b>Endotoxin</b>	Less than 0.1 ng/ug (1 EU/ug).
<b>Shipping</b>	Ambient

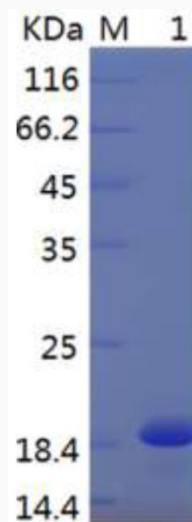
### GENE INFORMATION

 Tel: 1-631-559-9269 1-516-512-3133

 Email: [info@creative-biomart.com](mailto:info@creative-biomart.com)  Fax: 1-631-938-8127

 45-1 Ramsey Road, Shirley, NY 11967, USA

<b>Gene Name</b>	SNCA synuclein alpha [ Homo sapiens (human) ]
<b>Official Symbol</b>	SNCA
<b>Synonyms</b>	PD1; NACP; PARK1; PARK4; Alpha-Synuclein; a-Synuclein; Non-A Beta Component of AD Amyloid; Non-A4 Component of AmyloidPrecursor
<b>Gene ID</b>	6622
<b>mRNA Refseq</b>	NM_000345.4
<b>Protein Refseq</b>	NP_000336.1
<b>MIM</b>	163890
<b>UniProt ID</b>	P37840

**SDS-PAGE**


M: Marker; Sample in reducing conditions.

 Tel: 1-631-559-9269 1-516-512-3133

 Email: [info@creative-biomart.com](mailto:info@creative-biomart.com)  Fax: 1-631-938-8127

 45-1 Ramsey Road, Shirley, NY 11967, USA