

Recombinant Human SNCA Protein, Myc/DDK-tagged, C13 and N15-labeled

Cat. No. SNCA-6456H **Lot. No.** (See product label)

SPECIFICATION

Product Overview	SNCA MS Standard C13 and N15-labeled recombinant protein (NP_000336) with a C-terminal MYC/DDK tag, was expressed in HEK293 cells.
Species	Human
Source	HEK293
Description	Alpha-synuclein is a member of the synuclein family, which also includes beta- and gamma-synuclein. Synucleins are abundantly expressed in the brain and alpha- and beta-synuclein inhibit phospholipase D2 selectively. SNCA may serve to integrate presynaptic signaling and membrane trafficking. Defects in SNCA have been implicated in the pathogenesis of Parkinson disease. SNCA peptides are a major component of amyloid plaques in the brains of patients with Alzheimer's disease. Alternatively spliced transcripts encoding different isoforms have been identified for this gene.
Molecular Mass	14.3 kDa
AA Sequence	MDVFMKGLSKAKEGVVAAAETKQGVAAEAGKTKEGVLYVGSKTKEGVVHGVATV AEKTKEQVTNVGGAVVTGVTAVAQKTVEGAGSIAAATGFVKKDQLGKNEEGAPQE GILEDMPVDPDNEAYEMPSEEGYQDYEPATRTRPLEQKLISEEDLAANDILDYKDD DDKV
Purity	> 80% as determined by SDS-PAGE and Coomassie blue staining

 Tel: 1-631-559-9269 1-516-512-3133

 Email: info@creative-biomart.com  Fax: 1-631-938-8127

 45-1 Ramsey Road, Shirley, NY 11967, USA

Stability	Stable for 3 months from receipt of products under proper storage and handling conditions.
Storage	Store at -80 centigrade. Avoid repeated freeze-thaw cycles.
Concentration	50 µg/mL as determined by BCA
Storage Buffer	100 mM glycine, 25 mM Tris-HCl, pH 7.3.

GENE INFORMATION

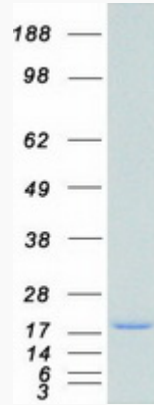
Gene Name	SNCA synuclein alpha [Homo sapiens (human)]
Official Symbol	SNCA
Synonyms	SNCA; synuclein, alpha (non A4 component of amyloid precursor); PARK1, PARK4, Parkinson disease (autosomal dominant, Lewy body) 4; alpha-synuclein; alpha synuclein; NACP; PD1; synuclein alpha-140; non A-beta component of AD amyloid; PARK1; PARK4; MGC110988;
Gene ID	6622
mRNA Refseq	NM_000345
Protein Refseq	NP_000336
MIM	163890
UniProt ID	P37840

 Tel: 1-631-559-9269 1-516-512-3133

 Email: info@creative-biomart.com  Fax: 1-631-938-8127

 45-1 Ramsey Road, Shirley, NY 11967, USA

SDS-PAGE



 Tel: 1-631-559-9269 1-516-512-3133

 Email: info@creative-biomart.com  Fax: 1-631-938-8127

 45-1 Ramsey Road, Shirley, NY 11967, USA