

Recombinant Full Length Human SNCB Protein, C-Flag-tagged

Cat. No. SNCB-1294HFL Lot. No. (See product label)

SPECIFICATION

Product Overview	Recombinant Full Length Human SNCB Protein, fused to Flag-tag at C-terminus, was expressed in Mammalian cells.
Species	Human
Source	Mammalian Cells
Description	This gene encodes a member of a small family of proteins that inhibit phospholipase D2 and may function in neuronal plasticity. The encoded protein is abundant in lesions of patients with Alzheimer disease. A mutation in this gene was found in individuals with dementia with Lewy bodies. Alternative splicing results in multiple transcript variants.
Form	25 mM Tris HCl, pH 7.3, 100 mM glycine, 10% glycerol.
Molecular Mass	14.1 kDa
AA Sequence	MDVFMKGLSMAKEGVVAAAEEKTKQGVTEAAEKTKEGVLYVGSKTREGVVQGVASV AEKTKEQASHLGGAV FSGAGNIAAATGLVKREEFPTDLKPEEVAQEAAEEPLIEPLMEPEGESYEDPPQEEY QEYEPEATRTRPLEQKLISEEDLAANDILDYKDDDDKV
Purity	> 80% as determined by SDS-PAGE and Coomassie blue staining.
Stability	Stable for 12 months from the date of receipt of the product under proper storage and

 Tel: 1-631-559-9269 1-516-512-3133

 Email: info@creative-biomart.com  Fax: 1-631-938-8127

 45-1 Ramsey Road, Shirley, NY 11967, USA

handling conditions. Avoid repeated freeze-thaw cycles.

Storage Store at -80 centigrade.

Concentration >50 ug/mL as determined by microplate BCA method.

Preparation Recombinant protein was captured through anti-DDK affinity column followed by conventional chromatography steps.

Full Length Full L.

GENE INFORMATION

Gene Name [SNCB synuclein beta \[Homo sapiens \(human\) \]](#)

Official Symbol [SNCB](#)

Synonyms beta-synuclein; synuclein, beta

Gene ID [6620](#)

mRNA Refseq [NM_001001502.3](#)

Protein Refseq [NP_001001502.1](#)

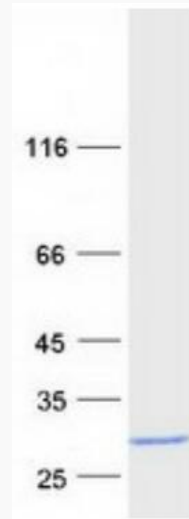
MIM [602569](#)

UniProt ID [Q16143](#)

 Tel: 1-631-559-9269 1-516-512-3133

 Email: info@creative-biomart.com  Fax: 1-631-938-8127

 45-1 Ramsey Road, Shirley, NY 11967, USA



Coomassie blue staining of purified SNCB protein.

 Tel: 1-631-559-9269 1-516-512-3133

 Email: info@creative-biomart.com  Fax: 1-631-938-8127

 45-1 Ramsey Road, Shirley, NY 11967, USA