

Recombinant Cynomolgus Monkey SNCG Protein (1-127 aa)

Cat. No. SNCG-2456C Lot. No. (See product label)

SPECIFICATION

Product Overview	Recombinant Cynomolgus Monkey SNCG Protein (1-127 aa) is produced by E. coli expression system. Research Area: Neuroscience. Protein Description: Full Length.
Species	Cynomolgus
Source	E.coli
ProteinLength	1-127 aa
Description	Plays a role in neurofilament network integrity. May be involved in modulating axonal architecture during development and in the adult. In vitro, increases the susceptibility of neurofilament-H to calcium-dependent proteases (By similarity). May also function in modulating the keratin network in skin. Activates the MAPK and Elk-1 signal transduction pathway.
Form	Tris-based buffer,50% glycerol
Molecular Mass	13.3 kDa
AA Sequence	MDVFKKGFSIAKEGVVGAVEKTKQGVTEAAEKTKEGVMYVGTKTKENVVHSVTSVA EKTKEQANAVSEAVVSSVNTVAAKTVEEAENIAVTSGVVRKEDLKPSAPQQEGEAA KEKEEVAEEAQSGGD
Purity	> 85% as determined by SDS-PAGE.

 Tel: 1-631-559-9269 1-516-512-3133

 Email: info@creative-biomart.com  Fax: 1-631-938-8127

 45-1 Ramsey Road, Shirley, NY 11967, USA

Notes	Repeated freezing and thawing is not recommended. Store working aliquots at 4 centigrade for up to one week.
Storage	The shelf life is related to many factors, storage state, buffer ingredients, storage temperature and the stability of the protein itself. Generally, the shelf life of liquid form is 6 months at -20 centigrade/-80 centigrade. The shelf life of lyophilized form is 12 months at -20 centigrade/-80 centigrade.
Concentration	A hardcopy of COA will be sent along with the products. Please refer to it for detailed information.

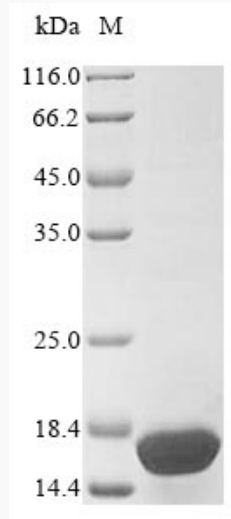
GENE INFORMATION

Gene Name	SNCG synuclein gamma [<i>Macaca fascicularis</i> (crab-eating macaque)]
Official Symbol	SNCG
Synonyms	SNCG;
Gene ID	102121834
mRNA Refseq	NM_001283870
Protein Refseq	NP_001270799
UniProt ID	Q2PFW6

 Tel: 1-631-559-9269 1-516-512-3133

 Email: info@creative-biomart.com  Fax: 1-631-938-8127

 45-1 Ramsey Road, Shirley, NY 11967, USA



(Tris-Glycine gel) Discontinuous SDS-PAGE (reduced) with 5% enrichment gel and 15% separation gel.

 Tel: 1-631-559-9269 1-516-512-3133

 Email: info@creative-biomart.com  Fax: 1-631-938-8127

 45-1 Ramsey Road, Shirley, NY 11967, USA