

Recombinant Human SNRPD1 protein, His & T7-tagged

Cat. No. SNRPD1-1530H Lot. No. (See product label)

SPECIFICATION

Product Overview	Recombinant Human SNRPD1 aa. (Met1~Arg119 (Accession # P62314)) fused with N-terminal His & T7 tag was produced in E. coli cells.
Species	Human
Source	E.coli
ProteinLength	Met1~Arg119
Description	This gene encodes a small nuclear ribonucleoprotein that belongs to the SNRNP core protein family. The protein may act as a charged protein scaffold to promote SNRNP assembly or strengthen SNRNP-SNRNP interactions through nonspecific electrostatic contacts with RNA. Two transcript variants encoding different isoforms have been found for this gene.
Form	Freeze-dried powder
Molecular Mass	Predicted Molecular Mass: 17.1kDa.
Endotoxin	<1.0EU per 1g (determined by the LAL method).
Purity	>95%
Characteristic	The isoelectric point is 11.6.

 Tel: 1-631-559-9269 1-516-512-3133

 Email: info@creative-biomart.com  Fax: 1-631-938-8127

 45-1 Ramsey Road, Shirley, NY 11967, USA

Applications	SDS-PAGE; WB; ELISA; IP.
Stability	The thermal stability is described by the loss rate. The loss rate was determined by accelerated thermal degradation test, that is, incubate the protein at 37°C for 48h, and no obvious degradation and precipitation were observed. The loss rate is less than 5% within the expiration date under appropriate storage condition.
Storage	Avoid repeated freeze/thaw cycles. Store at 2-8°C for one month. Aliquot and store at -80°C for 12 months.
Storage buffer	Supplied as lyophilized form in PBS, pH7.4, containing 5% trehalose, 0.01% sarcosyl.
Reconstitution	Reconstitute in sterile PBS, pH7.2-pH7.4.

GENE INFORMATION

Gene Name	SNRPD1 small nuclear ribonucleoprotein D1 polypeptide [Homo sapiens (human)]
Official Symbol	SNRPD1
Synonyms	SMD1; SNRPD; Sm-D1; HsT2456; Sm-D autoantigen; small nuclear ribonucleoprotein D1 polypeptide 16kDa pseudogene; snRNP core protein D1; small nuclear ribonucleoprotein Sm D1
Gene ID	6632
mRNA Refseq	NM_001291916.1
Protein Refseq	NP_001278845.1
UniProt ID	P62314

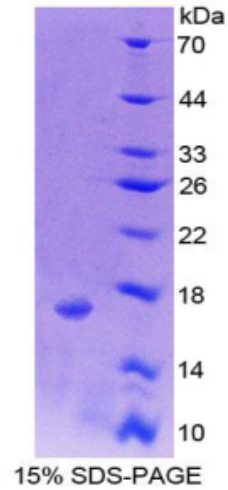
 Tel: 1-631-559-9269 1-516-512-3133

 Email: info@creative-biomart.com  Fax: 1-631-938-8127

 45-1 Ramsey Road, Shirley, NY 11967, USA



SDS-PAGE



Tel: 1-631-559-9269 1-516-512-3133

Email: info@creative-biomart.com Fax: 1-631-938-8127

45-1 Ramsey Road, Shirley, NY 11967, USA