

Recombinant Human SNRPE Protein, Myc/DDK-tagged, C13 and N15-labeled

Cat. No. SNRPE-3687H Lot. No. (See product label)

SPECIFICATION

Product Overview	SNRPE MS Standard C13 and N15-labeled recombinant protein (NP_003085) with a C-terminal MYC/DDK tag, was expressed in HEK293 cells.
Species	Human
Source	HEK293
Description	The protein encoded by this gene is a core component of U small nuclear ribonucleoproteins, which are key components of the pre-mRNA processing spliceosome. The encoded protein plays a role in the 3' end processing of histone transcripts. This protein is one of the targets in the autoimmune disease systemic lupus erythematosus, and mutations in this gene have been associated with hypotrichosis. Several pseudogenes of this gene have been identified.
Molecular Mass	10.6 kDa
AA Sequence	MAYRGQGQKVKVMVQPINLIFRYLQNRSRISQVWLYEQVNMRIEGCIIGFDEYMNLV LDDAEEIHSKTKSRKQLGRIMLKGDNITLLQSVSNTRTRPLEQKLISEEDLAANDILDY KDDDDKV
Purity	> 80% as determined by SDS-PAGE and Coomassie blue staining
Stability	Stable for 3 months from receipt of products under proper storage and handling conditions.

 Tel: 1-631-559-9269 1-516-512-3133

 Email: info@creative-biomart.com  Fax: 1-631-938-8127

 45-1 Ramsey Road, Shirley, NY 11967, USA

Storage	Store at -80 centigrade. Avoid repeated freeze-thaw cycles.
Concentration	50 µg/mL as determined by BCA
Storage Buffer	100 mM glycine, 25 mM Tris-HCl, pH 7.3.

GENE INFORMATION

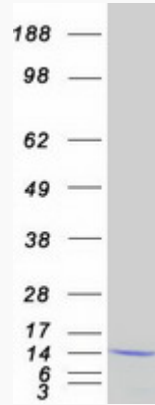
Gene Name	SNRPE small nuclear ribonucleoprotein polypeptide E [Homo sapiens (human)]
Official Symbol	SNRPE
Synonyms	SNRPE; small nuclear ribonucleoprotein polypeptide E; small nuclear ribonucleoprotein E; Sm E; snRNP-E; sm protein E; SME; Sm-E; B-raf;
Gene ID	6635
mRNA Refseq	NM_003094
Protein Refseq	NP_003085
MIM	128260
UniProt ID	P62304

 Tel: 1-631-559-9269 1-516-512-3133

 Email: info@creative-biomart.com  Fax: 1-631-938-8127

 45-1 Ramsey Road, Shirley, NY 11967, USA

SDS-PAGE



 Tel: 1-631-559-9269 1-516-512-3133

 Email: info@creative-biomart.com  Fax: 1-631-938-8127

 45-1 Ramsey Road, Shirley, NY 11967, USA