

# Recombinant Human SNRPN Protein, Myc/DDK-tagged, C13 and N15-labeled

**Cat. No.** SNRPN-3253H    **Lot. No.** (See product label)

## SPECIFICATION

### Product Overview

SNRPN MS Standard C13 and N15-labeled recombinant protein (NP\_073716) with a C-terminal MYC/DDK tag, was expressed in HEK293 cells.

### Species

Human

### Source

HEK293

### Description

This gene is located within the Prader-Willi Syndrome critical region on chromosome 15 and is imprinted and expressed from the paternal allele. It encodes a component of the small nuclear ribonucleoprotein complex, which functions in pre-mRNA processing and may contribute to tissue-specific alternative splicing. Alternative promoter use and alternative splicing result in a multitude of transcript variants encoding the same protein. Transcript variants that initiate at the CpG island-associated imprinting center may be bicistronic and also encode the SNRPN upstream reading frame protein (SNURF) from an upstream open reading frame. In addition, long spliced transcripts for small nucleolar RNA host gene 14 (SNHG14) may originate from the promoters at this locus and share exons with this gene. Alterations in this region are associated with parental imprint switch failure, which may cause Angelman syndrome or Prader-Willi syndrome.

### Molecular Mass

24.6 kDa

### AA Sequence

MTVGKSSKMLQHIDYRMRCILQDGRIFIGTFKAFDKHMNLILCDCDEFKIKPKNAKQ

 Tel: 1-631-559-9269    1-516-512-3133

 Email: [info@creative-biomart.com](mailto:info@creative-biomart.com)     Fax: 1-631-938-8127

 45-1 Ramsey Road, Shirley, NY 11967, USA

PEREEKRVLGLVLLRGENLVSM TVEGPPPKDTGIARVPLAGAAGGPGVGRAAGRGV  
 PAGVPIQPAPAGLAGPVRGVGGPSQQVMTPQGRGTVA AAAVAATASIAGAPTQYP  
 PGRGT PPPVGRAT PPPGIMAPPPGMRPPMGPPIGLPPARGTPIGM PPPGMRPPP  
 PGIRG PPPGMRPPR PTRRTRPLEQKLISEEDLAANDILDYKDDDDKV

**Purity** > 80% as determined by SDS-PAGE and Coomassie blue staining

**Stability** Stable for 3 months from receipt of products under proper storage and handling conditions.

**Storage** Store at -80 centigrade. Avoid repeated freeze-thaw cycles.

**Concentration** 50 µg/mL as determined by BCA

**Storage Buffer** 100 mM glycine, 25 mM Tris-HCl, pH 7.3.

## GENE INFORMATION

**Gene Name** SNRPN small nuclear ribonucleoprotein polypeptide N [ Homo sapiens (human) ]

**Official Symbol** SNRPN

**Synonyms** SNRPN; small nuclear ribonucleoprotein polypeptide N; Prader Willi syndrome chromosome region, PWCR; small nuclear ribonucleoprotein-associated protein N; HCERN3; RT LI; SM protein N; SM D; small nuclear ribonucleoprotein N; SMN; SNRNP N; SNURF SNRPN; tissue specific splicing protein; sm protein D; tissue-specific splicing protein; tissue-specific-splicing protein; PWCR; SM-D; sm-N; RT-LI; SNRNP-N; SNURF-SNRPN; FLJ33569; FLJ36996; FLJ39265; MGC29886; DKFZp762N022; DKFZp686C0927; DKFZp76111912; DKFZp686M12165;

**Gene ID** 6638

 Tel: 1-631-559-9269 1-516-512-3133

 Email: [info@creative-biomart.com](mailto:info@creative-biomart.com)  Fax: 1-631-938-8127

 45-1 Ramsey Road, Shirley, NY 11967, USA

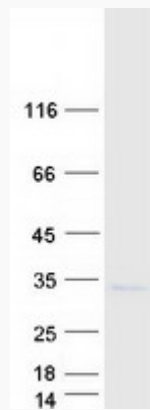
mRNA Refseq [NM\\_022805](#)

Protein Refseq [NP\\_073716](#)

MIM [182279](#)

UniProt ID [P63162](#)

**SDS-PAGE**



 Tel: 1-631-559-9269 1-516-512-3133

 Email: [info@creative-biomart.com](mailto:info@creative-biomart.com)  Fax: 1-631-938-8127

 45-1 Ramsey Road, Shirley, NY 11967, USA