

# Recombinant Human SNTB1 Protein, Myc/DDK-tagged, C13 and N15-labeled

Cat. No. SNTB1-6027H Lot. No. (See product label)

## SPECIFICATION

<b>Product Overview</b>	SNTB1 MS Standard C13 and N15-labeled recombinant protein (NP_066301) with a C-terminal MYC/DDK tag, was expressed in HEK293 cells.
<b>Species</b>	Human
<b>Source</b>	HEK293
<b>Description</b>	Dystrophin is a large, rod-like cytoskeletal protein found at the inner surface of muscle fibers. Dystrophin is missing in Duchenne Muscular Dystrophy patients and is present in reduced amounts in Becker Muscular Dystrophy patients. The protein encoded by this gene is a peripheral membrane protein found associated with dystrophin and dystrophin-related proteins. This gene is a member of the syntrophin gene family, which contains at least two other structurally-related genes.
<b>Molecular Mass</b>	57.9 kDa
<b>AA Sequence</b>	MAVAIAAAGPAGAGGGRAQRSGLLVLRDRWHKVLVNLSEDALVLSSEEGAA AYNGIGTATNGSFCRGAGAGHPGAGGAQPPDSPAGVRTAFTDLPEQVPESISNQK RGVKVLKQELGGLGISIKGGKENKMPILISKIFKGLAADQTQALYVGDAILSVNGADLR DATHDEAVQALKRAGKEVLLVLYMREATPYVKKGSPVSEIGWETPPPEPRLGGS TSDPPSSQSFSFHRDRKSIPLKMCYVTRSMALADPENRQLEIHSPDAKHTVILRSKD SATAQAWFSAIHSNVNDLLTRVIAEVREQLGKTGIAGSREIRHLGWLAEKVPGESKK QWKPALVVLTEKDLLIYDSMPRRKEAWFSPVHTYPLLATRLVHSGPGKGPQAGVD

 Tel: 1-631-559-9269 1-516-512-3133

 Email: [info@creative-biomart.com](mailto:info@creative-biomart.com)  Fax: 1-631-938-8127

 45-1 Ramsey Road, Shirley, NY 11967, USA

LSFATRTGTRQGIETHLFRAETSRDLSHWTRSIVQGCHNSAELIAEISTACTYKNQEC  
 RLTIHYENGFSITTEPQEGAFPKTIIQSPYEKCLKMSSDDGIRMLYLDFGGKDGELQLDL  
 HSCPPIVFIHSFLSAKITRLGLVATRTRPLEQKLISEEDLAANDILDYKDDDDKV

**Purity** > 80% as determined by SDS-PAGE and Coomassie blue staining

**Stability** Stable for 3 months from receipt of products under proper storage and handling conditions.

**Storage** Store at -80 centigrade. Avoid repeated freeze-thaw cycles.

**Concentration** 50 µg/mL as determined by BCA

**Storage Buffer** 100 mM glycine, 25 mM Tris-HCl, pH 7.3.

## GENE INFORMATION

**Gene Name** [SNTB1 syntrophin beta 1 \[ Homo sapiens \(human\) \]](#)

**Official Symbol** [SNTB1](#)

**Synonyms** SNTB1; syntrophin, beta 1 (dystrophin-associated protein A1, 59kDa, basic component 1); SNT2B1, syntrophin, beta 1 (dystrophin associated protein A1, 59kD, basic component 1); beta-1-syntrophin; 59 DAP; A1B; BSYN2; SNT2; tax interaction protein 43; TIP 43; syntrophin-2; 59 kDa dystrophin-associated protein A1 basic component 1; dystrophin-associated protein A1, 59kD, basic component 1; 59-DAP; DAPA1B; SNT2B1; TIP-43; FLJ22442; MGC111389;

**Gene ID** [6641](#)

**mRNA Refseq** [NM\\_021021](#)

 Tel: 1-631-559-9269 1-516-512-3133

 Email: [info@creative-biomart.com](mailto:info@creative-biomart.com)  Fax: 1-631-938-8127

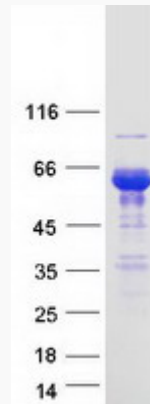
 45-1 Ramsey Road, Shirley, NY 11967, USA

**Protein Refseq** NP\_066301

**MIM** 600026

**UniProt ID** Q13884

**SDS-PAGE**



 Tel: 1-631-559-9269 1-516-512-3133

 Email: [info@creative-biomart.com](mailto:info@creative-biomart.com)  Fax: 1-631-938-8127

 45-1 Ramsey Road, Shirley, NY 11967, USA