

Recombinant Human SNX20 Protein, Myc/DDK-tagged, C13 and N15-labeled

Cat. No. SNX20-1843H Lot. No. (See product label)

SPECIFICATION

Product Overview	SNX20 MS Standard C13 and N15-labeled recombinant protein (NP_878274) with a C-terminal MYC/DDK tag, was expressed in HEK293 cells.
Species	Human
Source	HEK293
Description	SNX20 interacts with the cytoplasmic domain of PSGL1 (SELPLG) and cycles PSGL1 into endosomes.
Molecular Mass	36 kDa
AA Sequence	MASPEHPGSPGCMGPITQCTARTQQEAPATGPDLPHPGPDGHLDTHSGLSSNSSM TTRELQQYWQNQKCRWKHVKLLFEIASARIEERKVSFVVYQIIVIQTGSFDNNKAVL ERRYSDFAKLQKALLKTFREEIEDVEFPRKHLTGNFAEEMICERRRALQEYLGLLYAI RCVRRSREFLDFLTRPELREAFGCLRAGQYPRALELLLRVLPQEKLTAHCPAAAVP ALCAVLLCHRDLDRPAEFAAGERALQRLQAREGHRYYPPLLDAMVRLAYALGKDF VTLQERLEESQLRRPTPRGITLKELTVREYLHTRTRPLEQKLISEEDLAANDILDYKDD DDKV
Purity	> 80% as determined by SDS-PAGE and Coomassie blue staining
Stability	Stable for 3 months from receipt of products under proper storage and handling conditions.

 Tel: 1-631-559-9269 1-516-512-3133

 Email: info@creative-biomart.com  Fax: 1-631-938-8127

 45-1 Ramsey Road, Shirley, NY 11967, USA

Storage	Store at -80 centigrade. Avoid repeated freeze-thaw cycles.
Concentration	50 µg/mL as determined by BCA
Storage Buffer	100 mM glycine, 25 mM Tris-HCl, pH 7.3.
GENE INFORMATION	
Gene Name	SNX20 sorting nexin 20 [Homo sapiens (human)]
Official Symbol	SNX20
Synonyms	SNX20; sorting nexin 20; sorting nexin-20; selectin ligand interactor cytoplasmic 1; SLIC 1; SLIC1; selectin ligand interactor cytoplasmic-1; selectin ligand-interactor cytoplasmic 1; MGC35578;
Gene ID	124460
mRNA Refseq	NM_182854
Protein Refseq	NP_878274
MIM	613281
UniProt ID	Q7Z614

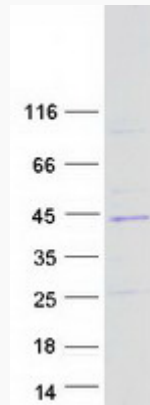
 Tel: 1-631-559-9269 1-516-512-3133

 Email: info@creative-biomart.com  Fax: 1-631-938-8127

 45-1 Ramsey Road, Shirley, NY 11967, USA



SDS-PAGE



Tel: 1-631-559-9269 1-516-512-3133

Email: info@creative-biomart.com Fax: 1-631-938-8127

45-1 Ramsey Road, Shirley, NY 11967, USA