

# Recombinant Human SNX31 Protein, Myc/DDK-tagged, C13 and N15-labeled

**Cat. No.** SNX31-4469H    **Lot. No.** (See product label)

## SPECIFICATION

### Product Overview

SNX31 MS Standard C13 and N15-labeled recombinant protein (NP\_689841) with a C-terminal MYC/DDK tag, was expressed in HEK293 cells.

### Species

Human

### Source

HEK293

### Description

SNX31 (Sorting Nexin 31) is a Protein Coding gene. Diseases associated with SNX31 include Melanoma, Cutaneous Malignant 1. Gene Ontology (GO) annotations related to this gene include phosphatidylinositol binding. An important paralog of this gene is SNX17.

### Molecular Mass

50.6 kDa

### AA Sequence

MKMHFCIPVSQQRSDALGGRYVLYSVHLDGFLFCRVRYSQLHGWNEQLRRVFGNC  
LPPFPPKYLLAMTTAMADERRDQLEQYLQNVMTDPNVLRSDFVFEFLKLAQLNTFDI  
ATKKAYLDIFLPNEQSIRIEIITSDTAERVLEVSHKIGLCRELLGYFGLFLIRFGKEGKL  
SVVKKLADFELPYVSLGSSEVENCKVGLRWYMAPSLDSVLMDCRVAVDLLYMQAI  
QDIEKGWAKPTQAQRQKLEAFQKEDSQTKFLELAREVRHYGYLQLDPCTCDYPES  
GSGAVLSVGNNEISCCITLPDSQTQDIVFQMSRVKCVQVTLGLTLLDTPGQRTLN  
QNLELRFQYSEDSCWQWFVIYTKQAFLLSSCLKMKMISEKMKVLAAGENTEMQIEVPEQ  
SKSKKYHIQQSQQKDYSSFLSRKSKIKIAKDDCVFGNIKEEDLTRTRPLEQKLISEEDL  
AANDILDYKDDDDKV

 Tel: 1-631-559-9269    1-516-512-3133

 Email: [info@creative-biomart.com](mailto:info@creative-biomart.com)     Fax: 1-631-938-8127

 45-1 Ramsey Road, Shirley, NY 11967, USA

<b>Purity</b>	> 80% as determined by SDS-PAGE and Coomassie blue staining
<b>Stability</b>	Stable for 3 months from receipt of products under proper storage and handling conditions.
<b>Storage</b>	Store at -80 centigrade. Avoid repeated freeze-thaw cycles.
<b>Concentration</b>	50 µg/mL as determined by BCA
<b>Storage Buffer</b>	100 mM glycine, 25 mM Tris-HCl, pH 7.3.

## GENE INFORMATION

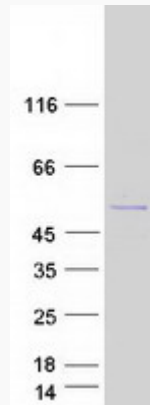
<b>Gene Name</b>	SNX31 sorting nexin 31 [ Homo sapiens (human) ]
<b>Official Symbol</b>	SNX31
<b>Synonyms</b>	SNX31; sorting nexin 31; sorting nexin-31; MGC39715;
<b>Gene ID</b>	169166
<b>mRNA Refseq</b>	NM_152628
<b>Protein Refseq</b>	NP_689841
<b>UniProt ID</b>	Q8N9S9

 Tel: 1-631-559-9269 1-516-512-3133

 Email: [info@creative-biomart.com](mailto:info@creative-biomart.com)  Fax: 1-631-938-8127

 45-1 Ramsey Road, Shirley, NY 11967, USA

**SDS-PAGE**



 Tel: 1-631-559-9269 1-516-512-3133

 Email: [info@creative-biomart.com](mailto:info@creative-biomart.com)  Fax: 1-631-938-8127

 45-1 Ramsey Road, Shirley, NY 11967, USA