

Recombinant Human SNX32 Protein, Myc/DDK-tagged, C13 and N15-labeled

Cat. No. SNX32-1317H Lot. No. (See product label)

SPECIFICATION

Product Overview SNX32 MS Standard C13 and N15-labeled recombinant protein (NP_689973) with a C-terminal MYC/DDK tag, was expressed in HEK293 cells.

Species Human

Source HEK293

Description SNX32 (Sorting Nexin 32) is a Protein Coding gene. Diseases associated with SNX32 include Eastern Equine Encephalitis. Among its related pathways are Endocytosis. Gene Ontology (GO) annotations related to this gene include phosphatidylinositol binding. An important paralog of this gene is SNX6.

Molecular Mass 46.5 kDa

AA Sequence

```
METYAEVGKEGKPCASVDLQGDSSLQVEISDAVSERDKVKFTVQTKSCLPHFAQT
EFSVVRQHEEFIWLHDAYVENEYAGLIIPPAPPRPDFEASREKLQKLGEGDSSVTR
EEFAKMKQELEAEYLAIFKKTAMHEVFLQRLAAHPTLRDNNFFVFLEYGQDLSVR
GKNRKELGGFLRNIVKSADEALITGMSGLKEVDDFFEHERTFLLYHTRIRDACLA
DRVMRAHKCLADDYIPIAALSSSLGTQEVNQLRTSFLKLAELFERLRKLEGRVVSDE
DLKLSMRLRYMRDSQAAKDLLYRRLRALADYENANKALDKARTRNREVRPAESHQ
QLCCQRFERLSDYAKQELMDFKSRRVSSFRKNLIELAELELKHAKASTLILRNTLVAL
KGEPTRTRPLEQKLISEEDLAANDILDYKDDDDKV
```

Purity > 80% as determined by SDS-PAGE and Coomassie blue staining

 Tel: 1-631-559-9269 1-516-512-3133

 Email: info@creative-biomart.com  Fax: 1-631-938-8127

 45-1 Ramsey Road, Shirley, NY 11967, USA

Stability	Stable for 3 months from receipt of products under proper storage and handling conditions.
Storage	Store at -80 centigrade. Avoid repeated freeze-thaw cycles.
Concentration	50 µg/mL as determined by BCA
Storage Buffer	100 mM glycine, 25 mM Tris-HCl, pH 7.3.

GENE INFORMATION

Gene Name	SNX32 sorting nexin 32 [Homo sapiens (human)]
Official Symbol	SNX32
Synonyms	SNX32; sorting nexin 32; SNX6B, sorting nexin 6B; sorting nexin-32; FLJ30934; sorting nexin 6B; sorting nexin-6B; SNX6B; MGC42112; MGC57276; DKFZp761P1320;
Gene ID	254122
mRNA Refseq	NM_152760
Protein Refseq	NP_689973
UniProt ID	Q86XE0

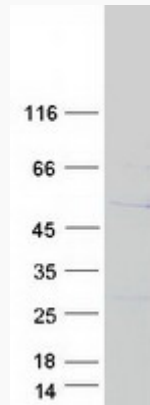
 Tel: 1-631-559-9269 1-516-512-3133

 Email: info@creative-biomart.com  Fax: 1-631-938-8127

 45-1 Ramsey Road, Shirley, NY 11967, USA



SDS-PAGE



Tel: 1-631-559-9269 1-516-512-3133

Email: info@creative-biomart.com Fax: 1-631-938-8127

45-1 Ramsey Road, Shirley, NY 11967, USA