

Recombinant Human SNX32 Protein, GST-tagged

Cat. No. SNX32-4300H Lot. No. (See product label)

SPECIFICATION

Product Overview	Human FLJ30934 full-length ORF (NP_689973.2, 1 a.a. - 403 a.a.) recombinant protein with GST-tag at N-terminal.
Species	Human
Source	Wheat Germ
Description	SNX32 (Sorting Nexin 32) is a Protein Coding gene. Among its related pathways are Endocytosis. GO annotations related to this gene include phosphatidylinositol binding. An important paralog of this gene is SNX6.
Molecular Mass	72.8 kDa
AA Sequence	METYAEVGKEGKPCASVDLQGDSSLQVEISDAVSERDKVKFTVQTKSCLPHFAQT EFSVVRQHEEFIWLHDAYVENEYAGLIIPPAPPRPDFEASREKLQKLGEGDSSVTR EEFAKMKQELEAEYLAIFKKTAMHEVFLQRLAAHPTLRRDHNFFVFLEYGQDLSVR GKNRKELLGGFLRNIVKSADEALITGMSGLKEVDDFFEHERTFLLLEYHTRIRDACLA DRVMRAHKCLADDYIPISAALSSLGTQEVNQLRTSFLKLAELFERLRKLEGRVASDE DLKLSMDMLRYMRDSQAAKDLLYRRLRALADYENANKALDKARTRNREVRPAESHQ QLCCQRFERLSDSAKQELMDFKSRRVSSFRKNLIELAELELKHAKASTLILRNTLVAL KGEP
Applications	Enzyme-linked Immunoabsorbent Assay Western Blot (Recombinant protein) Antibody Production

 Tel: 1-631-559-9269 1-516-512-3133

 Email: info@creative-biomart.com  Fax: 1-631-938-8127

 45-1 Ramsey Road, Shirley, NY 11967, USA

Protein Array

Notes	Best use within three months from the date of receipt of this protein.
Storage	Store at -80 centigrade. Aliquot to avoid repeated freezing and thawing.
Storage Buffer	50 mM Tris-HCl, 10 mM reduced Glutathione, pH=8.0 in the elution buffer.

GENE INFORMATION

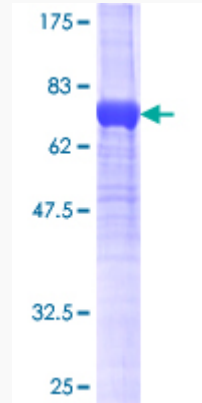
Gene Name	SNX32 sorting nexin 32 [Homo sapiens]
Official Symbol	SNX32
Synonyms	SNX32; sorting nexin 32; SNX6B, sorting nexin 6B; sorting nexin-32; FLJ30934; sorting nexin 6B; sorting nexin-6B; SNX6B; MGC42112; MGC57276; DKFZp761P1320;
Gene ID	254122
mRNA Refseq	NM_152760
Protein Refseq	NP_689973
UniProt ID	Q86XE0

 Tel: 1-631-559-9269 1-516-512-3133

 Email: info@creative-biomart.com  Fax: 1-631-938-8127

 45-1 Ramsey Road, Shirley, NY 11967, USA

**Quality Control
Testing**



12.5% SDS-PAGE Stained with Coomassie Blue.

 Tel: 1-631-559-9269 1-516-512-3133

 Email: info@creative-biomart.com  Fax: 1-631-938-8127

 45-1 Ramsey Road, Shirley, NY 11967, USA