

## Recombinant Human SOAT2 Protein (Met1-Val397), N-His-tagged

Cat. No. SOAT2-0252H Lot. No. (See product label)

### SPECIFICATION

<b>Product Overview</b>	Recombinant human SOAT2 (Met1-Val397) was fused with the N-terminal His tag and was expressed in E. coli.
<b>Species</b>	Human
<b>Source</b>	E.coli
<b>ProteinLength</b>	Met1-Val397
<b>Form</b>	Lyophilized powder/frozen liquid
<b>Molecular Mass</b>	43.67 kDa
<b>Purity</b>	>90% as determined by SDS-PAGE
<b>Notes</b>	For research use only.
<b>Storage</b>	Use a manual defrost freezer and avoid repeated freeze thaw cycles. Store at 2 to 8 centigrade for one week. Store at -20 to -80 centigrade for twelve months from the date of receipt.
<b>Storage Buffer</b>	Supplied as solution form in PBS or lyophilized from PBS.
<b>Reconstitution</b>	Reconstitute in sterile water for a stock solution.

 Tel: 1-631-559-9269 1-516-512-3133

 Email: [info@creative-biomart.com](mailto:info@creative-biomart.com)  Fax: 1-631-938-8127

 45-1 Ramsey Road, Shirley, NY 11967, USA

**Shipping** They are shipped out with dry ice/blue ice unless customers require otherwise.

## GENE INFORMATION

**Gene Name** [SOAT2 sterol O-acyltransferase 2 \[ Homo sapiens \(human\) \]](#)

**Official Symbol** [SOAT2](#)

**Synonyms** SOAT2; sterol O-acyltransferase 2; ACAT2; ACAT-2; cholesterol acyltransferase 2; acyl-CoA:cholesterol acyltransferase 2; acyl Co-A: cholesterol acyltransferase 2; acyl coenzyme A:cholesterol acyltransferase 2; acyl-coenzyme A:cholesterol acyltransferase 2; ARGP2; ACACT2; MGC116732;

**Gene ID** [8435](#)

**mRNA Refseq** [NM\\_003578](#)

**Protein Refseq** [NP\\_003569](#)

**MIM** [601311](#)

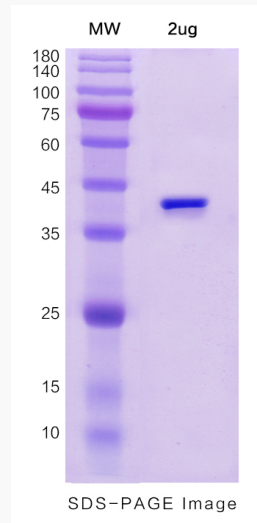
**UniProt ID** [O75908](#)

 Tel: 1-631-559-9269 1-516-512-3133

 Email: [info@creative-biomart.com](mailto:info@creative-biomart.com)  Fax: 1-631-938-8127

 45-1 Ramsey Road, Shirley, NY 11967, USA

**SDS-PAGE**



 Tel: 1-631-559-9269 1-516-512-3133

 Email: [info@creative-biomart.com](mailto:info@creative-biomart.com)  Fax: 1-631-938-8127

 45-1 Ramsey Road, Shirley, NY 11967, USA