

Recombinant Human SOCS3 Protein, Myc/DDK-tagged, C13 and N15-labeled

Cat. No. SOCS3-1315H Lot. No. (See product label)

SPECIFICATION

Product Overview

SOCS3 MS Standard C13 and N15-labeled recombinant protein (NP_003946) with a C-terminal MYC/DDK tag, was expressed in HEK293 cells.

Species

Human

Source

HEK293

Description

This gene encodes a member of the STAT-induced STAT inhibitor (SSI), also known as suppressor of cytokine signaling (SOCS), family. SSI family members are cytokine-inducible negative regulators of cytokine signaling. The expression of this gene is induced by various cytokines, including IL6, IL10, and interferon (IFN)-gamma. The protein encoded by this gene can bind to JAK2 kinase, and inhibit the activity of JAK2 kinase. Studies of the mouse counterpart of this gene suggested the roles of this gene in the negative regulation of fetal liver hematopoiesis, and placental development.

Molecular Mass

24.8 kDa

AA Sequence

MVTHSKFPAAGMSRPLDTSRLKTFSSKSEYQLVVNAVRKQLQESGFYWSAVTGGEA
NLLLSAEPAGTFLIRDSSDQRHFFTLVSVKTQSGTKNLRIQCEGGSFSLQSDPRSTQP
VPRFDCVLKLVHHYMPPPGAPSFPSPTPEPSSEVPEQPSAQPLPGSPRRRAYIYS
GGEKIPLVLSRPLSSNVATLQHLCKRKTVNGHLDSEYKVTQLPGPIREFLDQYDAPLT
RTRPLEQKLISEEDLAANDILDYKDDDDKV

Tel: 1-631-559-9269 1-516-512-3133

Email: info@creative-biomart.com Fax: 1-631-938-8127

45-1 Ramsey Road, Shirley, NY 11967, USA

Purity	> 80% as determined by SDS-PAGE and Coomassie blue staining
Stability	Stable for 3 months from receipt of products under proper storage and handling conditions.
Storage	Store at -80 centigrade. Avoid repeated freeze-thaw cycles.
Concentration	50 µg/mL as determined by BCA
Storage Buffer	100 mM glycine, 25 mM Tris-HCl, pH 7.3.

GENE INFORMATION

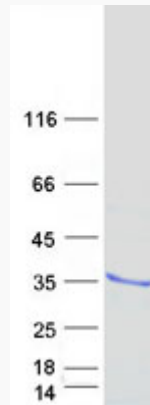
Gene Name	SOCS3 suppressor of cytokine signaling 3 [Homo sapiens (human)]
Official Symbol	SOCS3
Synonyms	SOCS3; suppressor of cytokine signaling 3; CIS3; Cish3; SOCS 3; SSI 3; CIS-3; STAT-induced STAT inhibitor 3; cytokine-induced SH2 protein 3; cytokine-inducible SH2 protein 3; SSI3; ATOD4; SSI-3; SOCS-3; MGC71791;
Gene ID	9021
mRNA Refseq	NM_003955
Protein Refseq	NP_003946
MIM	604176
UniProt ID	O14543

 Tel: 1-631-559-9269 1-516-512-3133

 Email: info@creative-biomart.com  Fax: 1-631-938-8127

 45-1 Ramsey Road, Shirley, NY 11967, USA

SDS-PAGE



 Tel: 1-631-559-9269 1-516-512-3133

 Email: info@creative-biomart.com  Fax: 1-631-938-8127

 45-1 Ramsey Road, Shirley, NY 11967, USA