

# Recombinant Full Length Human SOCS3 Protein, C-Flag-tagged

**Cat. No.** SOCS3-1793HFL    **Lot. No.** (See product label)

## SPECIFICATION

|                         |  |
|-------------------------|--|
| <b>Product Overview</b> | Recombinant Full Length Human SOCS3 Protein, fused to Flag-tag at C-terminus, was expressed in Mammalian cells.  |
| <b>Species</b>          | Human  |
| <b>Source</b>           | Mammalian Cells  |
| <b>Description</b>      | This gene encodes a member of the STAT-induced STAT inhibitor (SSI), also known as suppressor of cytokine signaling (SOCS), family. SSI family members are cytokine-inducible negative regulators of cytokine signaling. The expression of this gene is induced by various cytokines, including IL6, IL10, and interferon (IFN)-gamma. The protein encoded by this gene can bind to JAK2 kinase, and inhibit the activity of JAK2 kinase. Studies of the mouse counterpart of this gene suggested the roles of this gene in the negative regulation of fetal liver hematopoiesis, and placental development. |
| <b>Form</b>             | 25 mM Tris HCl, pH 7.3, 100 mM glycine, 10% glycerol.  |
| <b>Molecular Mass</b>   | 24.6 kDa   |
| <b>AA Sequence</b>      | MVTHSKFPAAGMSRPLDTSRLKTFSSKSEYQLVVNAVRKQLQESGFYWSAVTGGEA<br>NLLLSAEPAGTFLI RDSSDQRHFFTL SVKTQSGTKNLRIQCEGGSFSLQSDPRSTQP<br>VPRFDCVLKLVHHYMPPPGAPSFPSPP TEPSSSEVPEQPSAQPLPGSPRRRAYIYS<br>GGEKIPLVLSRPLSSNVATLQHLCKRKT VNGHLDSEYKVTQL PGPIREFLDQYDAPL T  |

 Tel: 1-631-559-9269    1-516-512-3133

 Email: [info@creative-biomart.com](mailto:info@creative-biomart.com)     Fax: 1-631-938-8127

 45-1 Ramsey Road, Shirley, NY 11967, USA

RTRPLEQKLISEEDLAANDILDYKDDDDKV

**Purity** > 80% as determined by SDS-PAGE and Coomassie blue staining.

**Stability** Stable for 12 months from the date of receipt of the product under proper storage and handling conditions. Avoid repeated freeze-thaw cycles.

**Storage** Store at -80 centigrade.

**Concentration** >50 ug/mL as determined by microplate BCA method.

**Preparation** Recombinant protein was captured through anti-DDK affinity column followed by conventional chromatography steps.

**Protein Families** Druggable Genome

**Protein Pathways** Adipocytokine signaling pathway, Insulin signaling pathway, Jak-STAT signaling pathway, Type II diabetes mellitus, Ubiquitin mediated proteolysis

**Full Length** Full L.

## GENE INFORMATION

**Gene Name** [SOCS3 suppressor of cytokine signaling 3 \[ Homo sapiens \(human\) \]](#)

**Official Symbol** [SOCS3](#)

**Synonyms** CIS3; SSI3; ATOD4; Cish3; SSI-3; SOCS-3

**Gene ID** [9021](#)

 Tel: 1-631-559-9269 1-516-512-3133

 Email: [info@creative-biomart.com](mailto:info@creative-biomart.com)  Fax: 1-631-938-8127

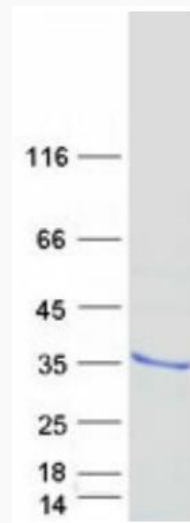
 45-1 Ramsey Road, Shirley, NY 11967, USA

mRNA Refseq [NM\\_003955.5](#)

Protein Refseq [NP\\_003946.3](#)

MIM [604176](#)

UniProt ID [O14543](#)



Coomassie blue staining of purified SOCS3 protein.

 Tel: 1-631-559-9269 1-516-512-3133

 Email: [info@creative-biomart.com](mailto:info@creative-biomart.com)  Fax: 1-631-938-8127

 45-1 Ramsey Road, Shirley, NY 11967, USA