

Active Recombinant Human Superoxide Dismutase 1 / SOD1 protein, Tag Free

Cat. No. SOD1-05H Lot. No. (See product label)

SPECIFICATION

Product Overview	Active Recombinant Human Superoxide Dismutase 1 / SOD1 protein(NP_000445) was expressed in E.coli.
Species	Human
Source	E.coli
Bio-activity	≥10000U/mg
Molecular Mass	31.8kDa(15.9kDa/ subunit)
Purity	≥95%(SDS-PAGE)
Storage	Lyophilized powder is stored at -20±5°C, and repeated freeze-thawing is avoided after dissolution
Reconstitution	It is recommended that sterile water be added to the vial to prepare a stock solution of 0.2 ug/ul. Centrifuge the vial at 4°C before opening to recover the entire contents.

GENE INFORMATION

Gene Name	SOD1 superoxide dismutase 1, soluble [Homo sapiens]
Official Symbol	SOD1

 Tel: 1-631-559-9269 1-516-512-3133

 Email: info@creative-biomart.com  Fax: 1-631-938-8127

 45-1 Ramsey Road, Shirley, NY 11967, USA

Synonyms SOD1; superoxide dismutase 1, soluble; ALS, ALS1, amyotrophic lateral sclerosis 1 (adult); superoxide dismutase [Cu-Zn]; IPOA; SOD, soluble; indophenoloxidase A; Cu/Zn superoxide dismutase; superoxide dismutase, cytosolic; ALS; SOD; ALS1; hSod1; homodimer

Gene ID 6647

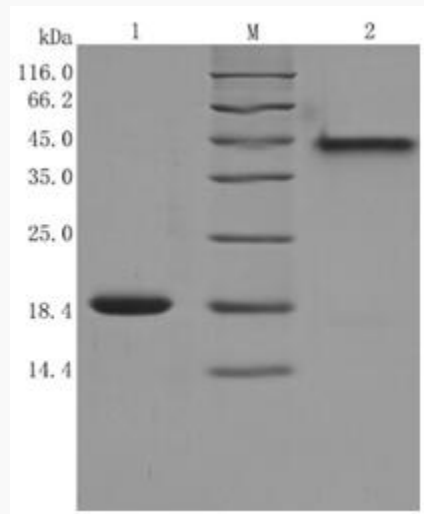
mRNA Refseq NM_000454

Protein Refseq NP_000445

MIM 147450

UniProt ID P00441

SDS-PAGE



Tel: 1-631-559-9269 1-516-512-3133

Email: info@creative-biomart.com Fax: 1-631-938-8127

45-1 Ramsey Road, Shirley, NY 11967, USA