

Recombinant Horse SOD1 protein, His & T7-tagged

Cat. No. SOD1-2021H Lot. No. (See product label)

SPECIFICATION

Product Overview	Recombinant Horse SOD1 aa. (Ala2~Pro154 (Accession # P00443)) fused with N-terminal His & T7 tag was produced in E. coli cells.
Species	Horse
Source	E.coli
ProteinLength	Ala2~Pro154
Form	Freeze-dried powder
Molecular Mass	Predicted Molecular Mass: 19.5kDa
Endotoxin	<1.0EU per 1ug (determined by the LAL method)
Purity	>95%
Characteristic	The isoelectric point is 6.6.
Applications	SDS-PAGE; WB; ELISA; IP.
Stability	The thermal stability is described by the loss rate of the target protein. The loss rate was determined by accelerated thermal degradation test, that is, incubate the protein at 37°C for 48h, and no obvious degradation and precipitation were observed. (Referring from China Biological Products Standard, which was calculated by the

 Tel: 1-631-559-9269 1-516-512-3133

 Email: info@creative-biomart.com  Fax: 1-631-938-8127

 45-1 Ramsey Road, Shirley, NY 11967, USA

Arrhenius equation.) The loss of this protein is less than 5% within the expiration date under appropriate storage condition.

Storage

Avoid repeated freeze/thaw cycles. Store at 2-8°C for one month. Aliquot and store at -80°C for 12 months.

Storage Buffer

Supplied as lyophilized form in PBS, pH7.4, containing 5% trehalose, 0.01% sarcosyl.

Reconstitution

Reconstitute in sterile PBS, pH7.2-pH7.4.

GENE INFORMATION

Gene Name

SOD1 superoxide dismutase 1 [*Equus caballus* (horse)]

Official Symbol

SOD1

Synonyms

Abcc6; ATP binding cassette subfamily C member 6; Mrp6; multidrug resistance-associated protein 6; ATP-binding cassette sub-family C member 6; ATP-binding cassette, sub-family C (CFTR/MRP), member 6; ATP-binding cassette, subfamily C (CFTR/MRP), member 6; MLP-1; MRP-like protein 1; liver multidrug resistance-associated protein 6

Gene ID

100033855

mRNA Refseq

NM_001081826.3

Protein Refseq

NP_001075295.1

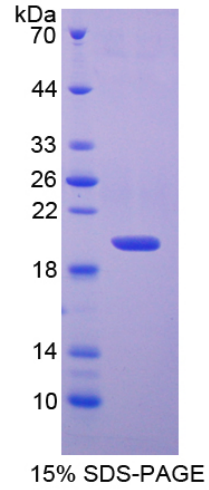
UniProt ID

P00443

 Tel: 1-631-559-9269 1-516-512-3133

 Email: info@creative-biomart.com  Fax: 1-631-938-8127

 45-1 Ramsey Road, Shirley, NY 11967, USA



SDS-PAGE

 Tel: 1-631-559-9269 1-516-512-3133

 Email: info@creative-biomart.com  Fax: 1-631-938-8127

 45-1 Ramsey Road, Shirley, NY 11967, USA