

Recombinant Chicken SOD1 protein, His & T7-tagged

Cat. No. SOD1-2022C Lot. No. (See product label)

SPECIFICATION

Product Overview	Recombinant Chicken SOD1 aa. (Ala2~Cys154 (Accession # P80566)) fused with N-terminal His & T7 tag was produced in E. coli cells.
Species	Chicken
Source	E.coli
ProteinLength	Ala2~Cys154
Form	Freeze-dried powder
Molecular Mass	Predicted Molecular Mass: 19.1kDa
Endotoxin	<1.0EU per 1ug (determined by the LAL method)
Purity	>95%
Characteristic	The isoelectric point is 6.8.
Applications	SDS-PAGE; WB; ELISA; IP.
Stability	The thermal stability is described by the loss rate of the target protein. The loss rate was determined by accelerated thermal degradation test, that is, incubate the protein at 37°C for 48h, and no obvious degradation and precipitation were observed. (Referring from China Biological Products Standard, which was calculated by the

 Tel: 1-631-559-9269 1-516-512-3133

 Email: info@creative-biomart.com  Fax: 1-631-938-8127

 45-1 Ramsey Road, Shirley, NY 11967, USA

Arrhenius equation.) The loss of this protein is less than 5% within the expiration date under appropriate storage condition.

Storage

Avoid repeated freeze/thaw cycles. Store at 2-8°C for one month. Aliquot and store at -80°C for 12 months.

Storage Buffer

Supplied as lyophilized form in PBS, pH7.4, containing 5% trehalose, 0.01% sarcosyl.

Reconstitution

Reconstitute in sterile PBS, pH7.2-pH7.4.

GENE INFORMATION

Gene Name

SOD1 superoxide dismutase 1, soluble [*Gallus gallus* (chicken)]

Official Symbol

SOD1

Synonyms

ABCC8; ATP binding cassette subfamily C member 8; HI; SUR; HHF1; MRP8; PHHI; SUR1; ABC36; HRINS; TNDM2; SUR1delta2; ATP-binding cassette sub-family C member 8; ATP-binding cassette transporter sub-family C member 8; ATP-binding cassette, sub-family C (CFTR/MRP), member 8; sulfonylurea receptor (hyperinsulinemia); sulfonylurea receptor 1

Gene ID

395938

mRNA Refseq

NM_205064.1

Protein Refseq

NP_990395.1

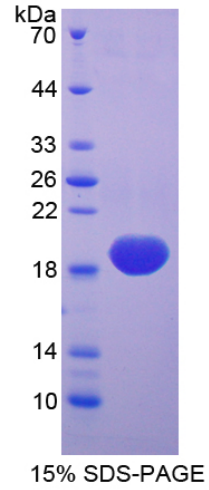
UniProt ID

P80566

 Tel: 1-631-559-9269 1-516-512-3133

 Email: info@creative-biomart.com  Fax: 1-631-938-8127

 45-1 Ramsey Road, Shirley, NY 11967, USA



SDS-PAGE

 Tel: 1-631-559-9269 1-516-512-3133

 Email: info@creative-biomart.com  Fax: 1-631-938-8127

 45-1 Ramsey Road, Shirley, NY 11967, USA