

## Recombinant Sheep SOD1 protein, His & T7-tagged

Cat. No. SOD1-2024S Lot. No. (See product label)

### SPECIFICATION

<b>Product Overview</b>	Recombinant Sheep SOD1 aa. (Ala2~Pro152 (Accession # P09670)) fused with N-terminal His & T7 tag was produced in E. coli cells.
<b>Species</b>	Sheep
<b>Source</b>	E.coli
<b>ProteinLength</b>	Ala2~Pro152
<b>Form</b>	Freeze-dried powder
<b>Molecular Mass</b>	Predicted Molecular Mass: 19.4kDa
<b>Endotoxin</b>	<1.0EU per 1ug (determined by the LAL method)
<b>Purity</b>	>95%
<b>Characteristic</b>	The isoelectric point is 6.7.
<b>Applications</b>	SDS-PAGE; WB; ELISA; IP.
<b>Stability</b>	The thermal stability is described by the loss rate of the target protein. The loss rate was determined by accelerated thermal degradation test, that is, incubate the protein at 37°C for 48h, and no obvious degradation and precipitation were observed. (Referring from China Biological Products Standard, which was calculated by the

 Tel: 1-631-559-9269 1-516-512-3133

 Email: [info@creative-biomart.com](mailto:info@creative-biomart.com)  Fax: 1-631-938-8127

 45-1 Ramsey Road, Shirley, NY 11967, USA

Arrhenius equation.) The loss of this protein is less than 5% within the expiration date under appropriate storage condition.

**Storage**

Avoid repeated freeze/thaw cycles. Store at 2-8°C for one month. Aliquot and store at -80°C for 12 months.

**Storage Buffer**

Supplied as lyophilized form in PBS, pH7.4, containing 5% trehalose, 0.01% sarcosyl.

**Reconstitution**

Reconstitute in sterile PBS, pH7.2-pH7.4.

## GENE INFORMATION

**Gene Name**

SOD1 superoxide dismutase 1 [ *Ovis aries* (sheep) ]

**Official Symbol**

SOD1

**Synonyms**

Abcb4; ATP-binding cassette, sub-family B (MDR/TAP), member 4; Mdr2; Pgy2; Pgy-2; mdr-2; phosphatidylcholine translocator ABCB4; ATP-binding cassette sub-family B member 4; P glycoprotein 2; P-glycoprotein 3; multidrug resistance protein 2; multidrug resistance protein 3

**Gene ID**

100270717

**mRNA Refseq**

NM\_001145185.1

**Protein Refseq**

NP\_001138657.1

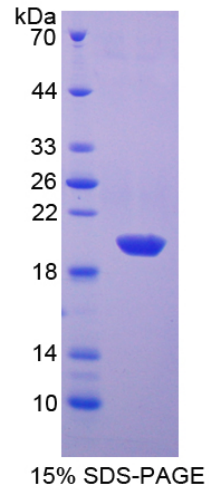
**UniProt ID**

P09670

 Tel: 1-631-559-9269 1-516-512-3133

 Email: [info@creative-biomart.com](mailto:info@creative-biomart.com)  Fax: 1-631-938-8127

 45-1 Ramsey Road, Shirley, NY 11967, USA



SDS-PAGE

Tel: 1-631-559-9269 1-516-512-3133

Email: [info@creative-biomart.com](mailto:info@creative-biomart.com) Fax: 1-631-938-8127

45-1 Ramsey Road, Shirley, NY 11967, USA